

# Device tag list

Heller\_Dynam\_Bed\_2L2C

device tag	number	denomination	Type	Manufacturer	Heller no.
+H1-300.1	1	cooling unit	ERK10W-PWT-R134a Heller-UL 400V 50Hz, 460V 60Hz 5,2kW	BKW	01.112899
+EC-300.2	1	control cabinet cooling			
+EC-300.3	1	control cabinet cooling			
+MC-300.5	1	adapter flange		Heller Maschinenfabrik	
+H1-300.6	1	ball valve	75-104-01-01 3/4" NPT	Apollo	01.113288
+H1-300.7	1	ball valve	75-104-01-01 3/4" NPT	Apollo	01.113288
+MC-300.9	1	control valve	223.1209.000 DN15 3-12 l/min	Taconova	01.100682
+MU-300.20	1	plastic pipe	PA 12x1,5 1 820 712 103	AVENTICS	01.093304
+MU-300.21	1	plastic pipe	PA 12x1,5 1 820 712 103	AVENTICS	01.093304
+MC-300.30	1	hose line	DIN 20066-2SC 10 -NN-2350-P 462-6-2350	Parker	01.104632
+MC-300.31	1	hose line	DIN 20066-2SC 10 -NN-2350-P 462-6-2350	Parker	01.104632
+MU-310.1	1	directional control valve	SGH130A-30G10Y-5WZ G3/8 30bar M12x1	SMC	01.102730
+MU-310.2	1	plastic pipe	PA 8x1 1 820 712 102	AVENTICS	01.093303
	1	check valve	RHD12LOMD-CF	Parker	01.002260

Änderungen nur im CAD-Original!  
 Changes in CAD only!  
 Mudanças no original CAD somente!

© Copyright reserved - Gebr. HELLER Maschinenfabrik GmbH, D-72822 Nürtingen  
 Schutzvermerk nach DIN 34 beachten!  
 Attention! Observe DIN 34  
 Atenção! Atente DIN 34

← &L+M/1

+H1/1 →

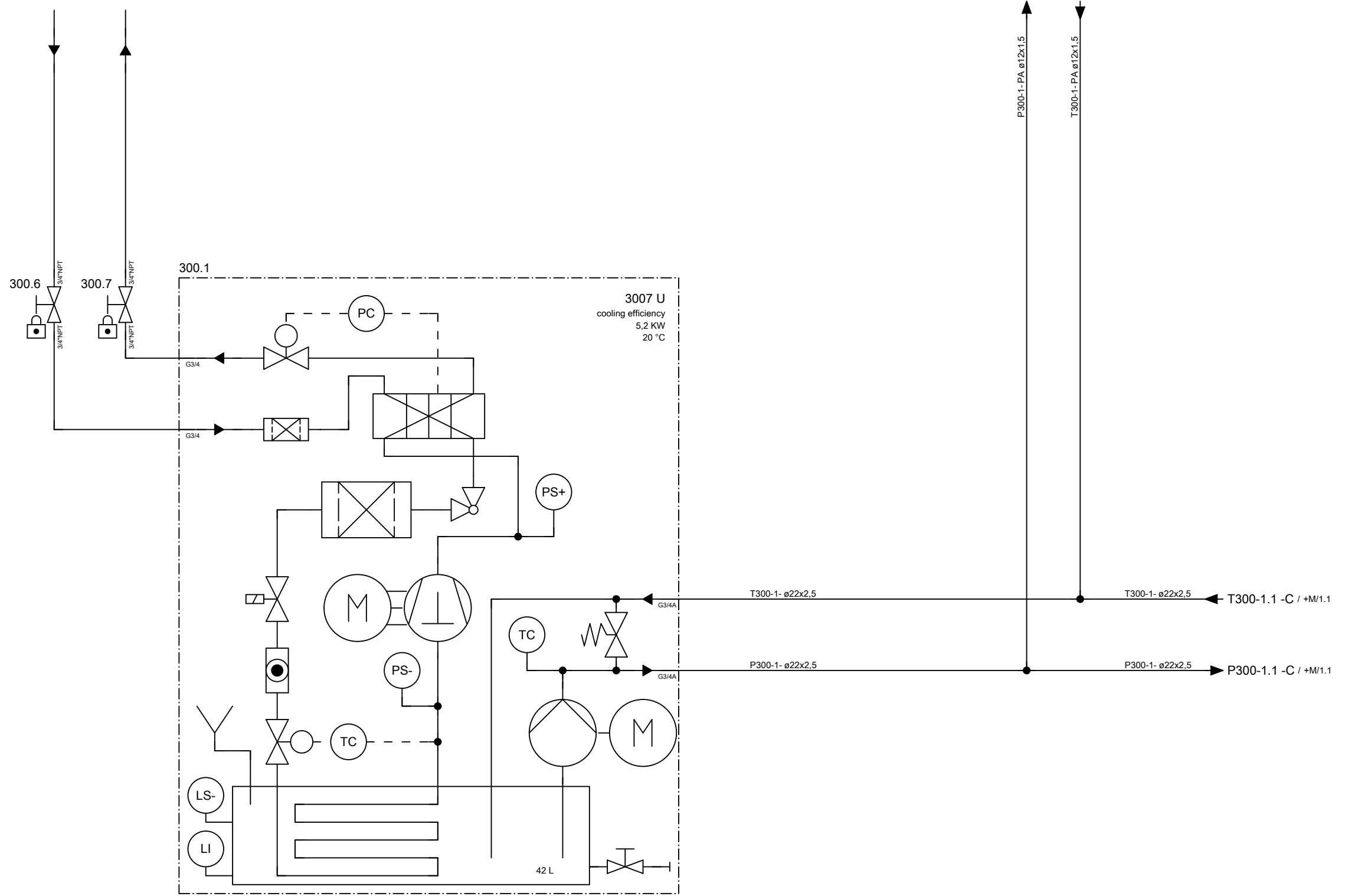
ART DER AENDERUNG/REVISION/DESCRIÇÃO DE ALTERAÇÃO		Index	ZONE/ZONA	DATUM/DATE	NAME/NOME	PROJ./PROJ. PROJ.	<div style="text-align: center; font-weight: bold; font-size: 1.2em;">HELLER</div> KUNDE/CUSTOMER/CLIENTE Paccar, Columbus USA	PLAN/PLAN/PLANO
CAD-System		URSPR./ORIG.	GEPR./CHECK./REG.			M-NR/M-NO/ M-NO		project
ePLAN 2.2.5		ERS./REP.	BEARB./CHG./ALT.	04.04.2017	AHFE/ZAJ	M54802	BENENNUNG/NAME/DENOMINAÇÃO Device tag list cooling water	Machine
		ERS.D./REP.W.	GEZ./DRAWN/DES.	04.04.2017	AHFE/ZAJ	H 10000 MC		INV-NR/INV-NO/NO-INV
								&C cooling water diagram
								Mounting position
								Page name
								0
								A3

+M/1.5  
300  
machine cooling system

Seamless precision steel pipe acc. to DIN ISO 10763 E235+N, galvanised, chromium6-free  
Parker screw connections, type EO-2 Plus, chromium6-free, male stud connector with soft seal acc. to ISO 1179-2 type E  
Parker 2SC-462 hose acc. to ISO 11237-1 EN 857, hose fitting acc. to DIN ISO 12151-2, CA form

reservoir capacity 42 L  
process medium Demineralised water with anti-corrosion agent  
mixing ratio see plates on cooling unit

cooling water provided by customer  
max. 35°C



Änderungen nur im CAD-Original!  
Changes in CAD only!  
Mudanças no original CAD somente!

© Copyright reserved - Gebr. HELLER Maschinenfabrik GmbH, D-72822 Nürtingen  
Schutzvermerk nach DIN 34 beachten!  
Attention! Observe DIN 34  
Atenção! Atenção DIN 34

← +/0 +MU/1 →

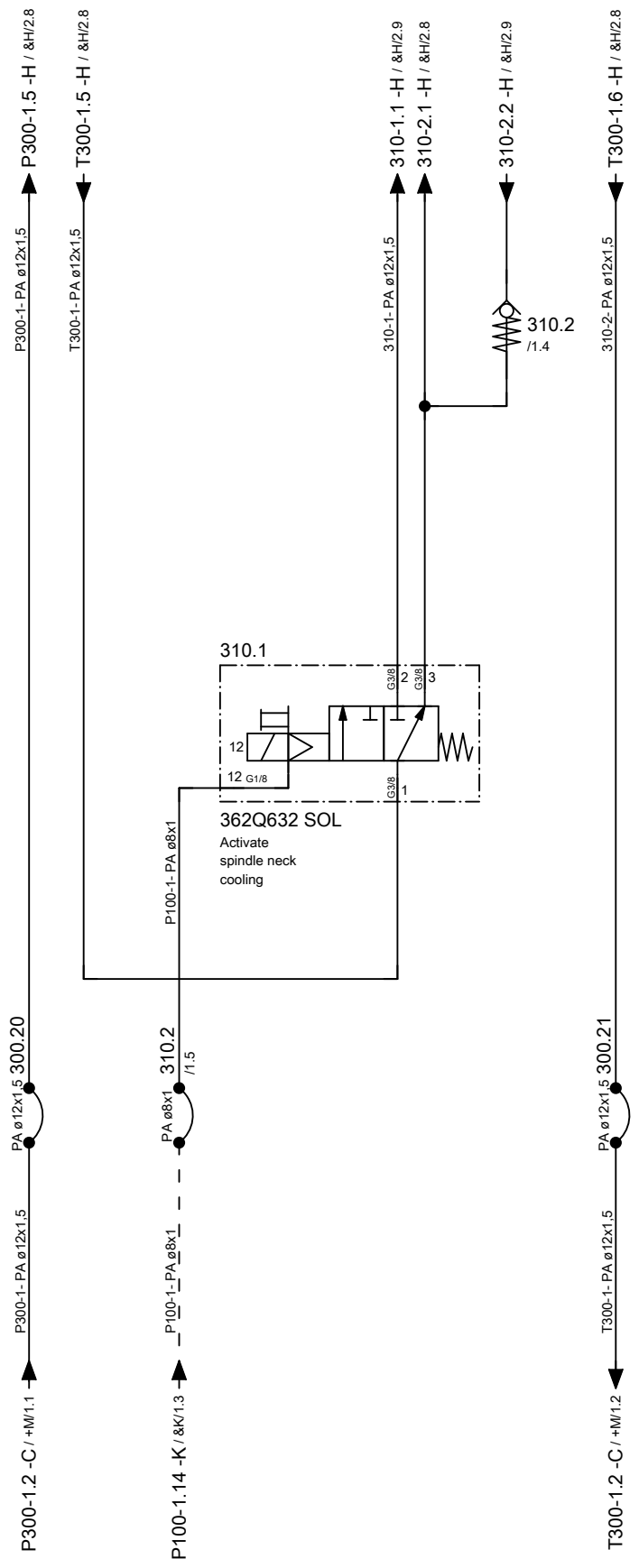
				PROJ./PROJ./PROJ. 54802.00	<b>HELLER</b>	KUNDE/CUSTOMER/CLIENTE Paccar, Columbus USA	PLAN/PLAN/PLANO project MP.05480200_F	
				M-NR/M-MO/ M-NO M54802		BENENNUNG/NAME/DENOMINAÇÃO cooling water diagram	INV-NR/INV-NO/NO-INV 01.106964	Machine =M54802
ART DER AENDERUNG/REVISION/DESCRIÇÃO DE ALTERAÇÃO				Index	ZONE/ZONA	DATUM/DATE	NAME/NOME	Document type &C cooling water diagram
CAD-System <b>ePLAN 2.2.5</b>	URSPR./ORIG.	GEPR./CHECK./REG.						Mounting position +H1 HELP1
	ERS./REP.	BEARB./CHG./ALT.		04.04.2017	AHFE/ZAJ			Page name 1
	ERS.D./REP.W.	GEZ./DRAWN/DES.		14.03.2016	AHFE/HOP			
				WERKSTÜCK/ PART/PEÇA				A3

Heller\_2L

Änderungen nur im CAD-Original!  
Changes in CAD only!  
Mudanças no original CAD somente!

© Copyright reserved - Gebr. HELLER Maschinenfabrik GmbH, D-72622 Nürtingen  
Schutzvermerk nach DIN 34 beachten!  
Attention! Observe DIN 34  
Atenção! Atenção DIN 34

310  
Spindle  
neck cooling



← +H1/1

+M/1 →

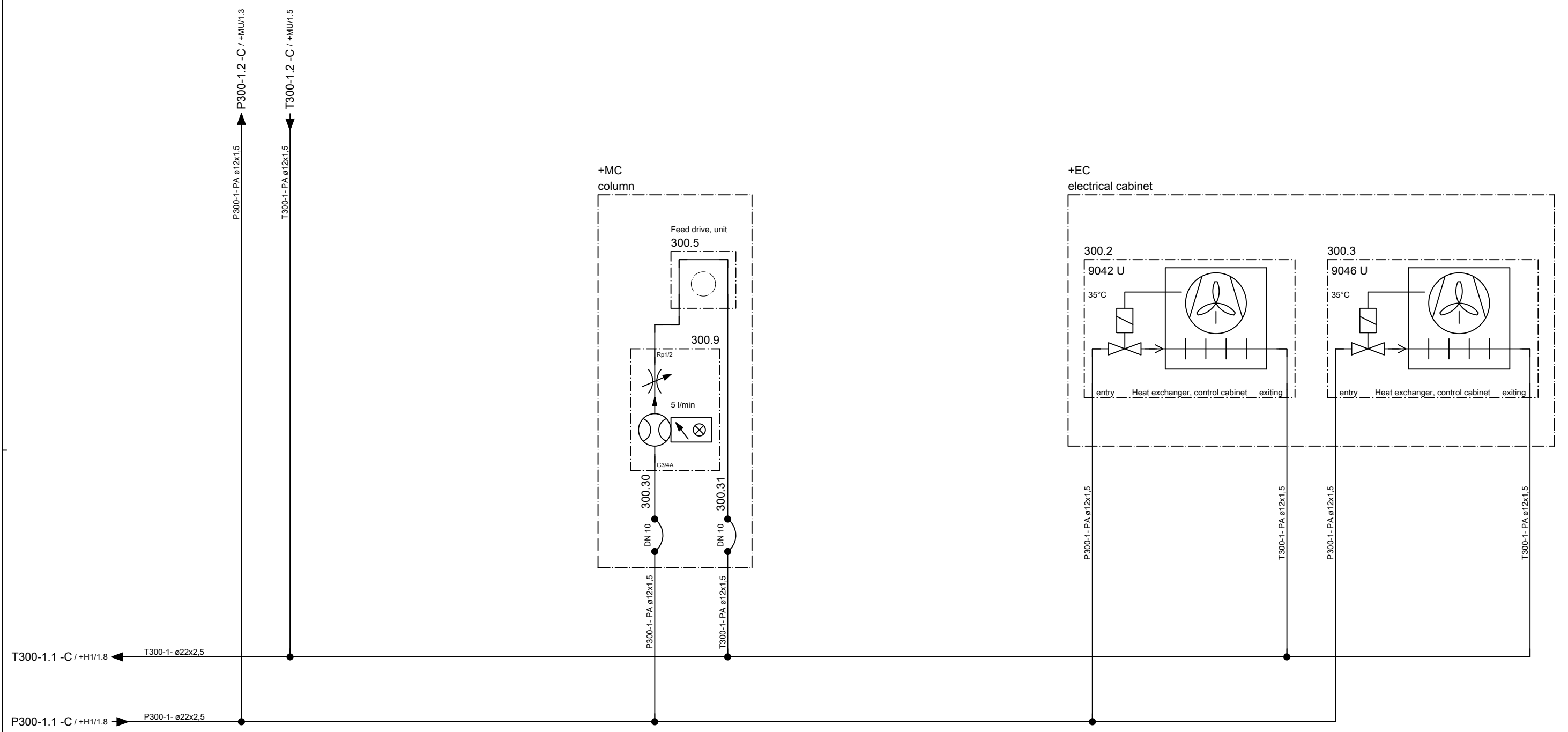
ART DER AENDERUNG/REVISION/DESCRIÇÃO DE ALTERAÇÃO		Index	ZONE/ZONA	DATUM/DATE	NAME/NOME	PROJ./PROJ./PROJ.	54802.00	<b>HELLER</b>	KUNDE/CUSTOMER/CLIENTE	PLAN/PLAN/PLANO
CAD-System		URSPR./ORIG.	GEPR./CHECK./REG.			M-NR/M-NO/ M-NO	M54802		Paccar, Columbus USA	project
ePLAN 2.2.5		ERS./REP.	BEARB./CHG./ALT.	14.07.2016	AHFE/ZAJ	TYP/TYPE/ TIPO	H 10000 MC	cooling water diagram	Machine	=M54802
		ERS.D./REP.W.	GEZ./DRAWN/DES.	14.03.2016	AHFE/HOP	WERKSTÜCK/ PART/PEÇA			INV-NR/INV-NO/NO-INV	Document type
									Mounting position	+MU unit
									Page name	1

Heller\_2L

Änderungen nur im CAD-Original!  
Changes in CAD only!  
Mudanças no original CAD somente!

© Copyright reserved - Gebr. HELLER Maschinenfabrik GmbH, D-72622 Nürtingen  
Schutzvermerk nach DIN 34 beachten!  
Attention! Observe DIN 34  
Atenção! Atenção DIN 34

+H1/1.4  
300  
machine cooling system



← +MU/1

&K+0 →

ART DER AENDERUNG/REVISION/DESCRIÇÃO DE ALTERAÇÃO		Index	ZONE/ZONA	DATUM/DATE	NAME/NOME	PROJ./PROJ. PROJ.	<p><b>HELLER</b></p> <p>cooling water diagram</p>	KUNDE/CUSTOMER/CLIENTE	PLAN/PLAN/PLANO
CAD-System		URSPPR./ORIG.	GEPR./CHECK./REG.	BEARB./CHG./ALT.	AHFE/ZAJ	M-NR/M-NO/ M-NO		Paccar, Columbus USA	project
ePLAN 2.2.5		ERS./REP.	GEZ./DRAWN/DES.	14.03.2016	AHFE/HOP	TYP/TYPE/ TIPO		INV-NR/INV-NO/NO-INV	Machine
		ERS.D./REP.W.				WERKSTÜCK/ PART/PEÇA		Document type	MP.05480200_F
								Mounting position	=M54802
								Page name	&C cooling water diagram
									+M machine
									1