

Device tag list

Heller_Dynam_Bed_2L2C

device tag	number	denomination	Type	Manufacturer	Heller no.	device tag	number	denomination	Type	Manufacturer	Heller no.
+H1-0.2	1	oil level indicator	FSA-127-1.XI-/12 700036	Hydac	01.031751	+H1-0.24-1	1	pressure gauge	EN837-23-B-063-G1/4B- 0/250bar-1,6-Glyz schwarz		01.009677
+H1-0.3	1	level sensor	LK7022	IFM Electronic	01.089136	+H1-0.24-2	1	high-pressure hose	S100-AC-AC-0063 DN2 630 mm 250bar	Hydrotechnik	01.006183
+H1-0.3-0.1	1	hydraulic power unit		Heller Maschinenfabrik		+H1-0.25	1	Evaluation unit	TR7439	IFM Electronic	01.112877
+H1-0.4	1	filler filter	ELF P 3 F 10 W1.X R900011023	Bosch Rexroth	01.100511	+H1-0.26	1	plate	min./max.	Heller Maschinenfabrik	10.500538
+H1-0.5	1	Three-phase motor	1LE1023-1CB03-4FA4-Z 1LE1023-1CB03-4FA4-Z L02+M10	Siemens	21.022591E	+H1-0.27	1	plate	filter element	Heller Maschinenfabrik	10.500947
+H1-0.6	1	pump carrier	PK 300/05/21-20 103026052120	KTR	01.111926	+H1-0.29	1	pressure relief valve	DBDS6G1X/315 G1/4 R900423720	Bosch Rexroth	01.103214
	1	flange	AB33-33/PTFL 300 R900025969	Bosch Rexroth	01.106677	+H1-0.30	1	pressure relief valve	DBDS10G1X/200 G1/2 R900424140	Bosch Rexroth	01.087661
+H1-0.7	1	coupling	ROTEX 28 ST, 92-Sh A T-Pur D1=22, D2=38	KTR	01.097519	+H1-0.31	1	coupling	NS-1002-16FB	Parker	01.112291
+H1-0.8	1	pumps combination	A10VSO28DR1/31R-VPA12KB2-SO275 +A10VSO10DR/52R-VSA14N00	Bosch Rexroth	01.099999		1	protective cap	NR-100	Parker	01.112292
+H1-0.8-1	1	axial piston pump	A10VSO28DR1/31R-VPA12KB2-SO275 R902466631	Bosch Rexroth		+H1-0.32	1	check valve	RHD22LOMD-CF	Parker	01.002262
+H1-0.8-2	1	axial piston pump	A10VSO10DR/52R-VSA14N00 R902428494	Bosch Rexroth		+H1-0.35	1	vent valve	3.3518-05 002	Teves	01.002650
+H1-0.9	1	measuring connection	GMA3/18LOMDCF	Parker	01.084636		1	nipple	D8	Heller Maschinenfabrik	00.783370
+H1-0.10	1	hose line	DIN 20066-2SC16-NN- 650-P 462-10- 650	Parker	01.109210	+MU-0.50	1	hose line	DIN 20066-2SC10-NN-2800-P 462- 6-2800	Parker	01.099730
+H1-0.11	1	hose line	S100-CR-CR-....	Hydrotechnik		+MU-0.51	1	hose line	DIN 20066-2SC10-NN-2800-P 462- 6-2800	Parker	01.099730
+H1-0.12	1	pressure switch	PN7092 0-100bar, G1/4	IFM Electronic	01.111726	+MU-10.1	1	manifold	A064 R3/8 SB2	Parker	01.078214
+H1-0.13	1	measuring connection	GMA3/12LOMDCF	Parker	01.084635	+MU-10.2	1	directional control valve	4WE 6 D 6X/-EG24N9K73L/SO407, 8W	Bosch Rexroth	01.098700
+H1-0.14	1	hose line	DIN 20066-2SC10-NN- 900-P 462- 6- 900	Parker	01.099725	+MU-10.5	1	hose line	S100-CR-CR-....	Hydrotechnik	
+H1-0.15	1	hose line	S100-CR-CR-....	Hydrotechnik		+MU-10.6	1	pressure switch	PN7092 0-100bar, G1/4	IFM Electronic	01.111726
+H1-0.16	1	pressure switch	PN7071 0-250bar, G1/4	IFM Electronic	01.111727	+MU-10.10	1	hose line	381-4 SAE 100R2 DIN20022 2SN	Parker	
+H1-0.17	1	return line filter	10TEN0100-H10XLA00-P2,2-M-R4 R928041275	Bosch Rexroth	01.106168	+MU-10.11	1	hose line	381-4 SAE 100R2 DIN20022 2SN	Parker	
+H1-0.17-1	1	filter element	1.0100 H10XL-A00-0-M R928005873	Bosch Rexroth	01.106169	+MU-10.20	1	tool spindle	EPC100	Heller Maschinenfabrik	
+H1-0.17-2	1	clogging indicator	WE-2SP-M12x1 R928028410	Bosch Rexroth	01.106289	+H1-32.2	1	intermediate plate	HSZ 06 A085-3X/M00 R900514667	Bosch Rexroth	01.092767
+H1-0.18	1	oil/water heat exchanger	AB32-12/00-K-006-22 R900028816	Bosch Rexroth	01.102735	+H1-32.2-1	1	nozzle	D=2,5 - M8x1 DIN 906 00137445	Bosch Rexroth	01.093578
+H1-0.19	1	hose line	DIN 20066-2SC10-NN- 650-P 462- 6- 650	Parker	01.108379	+H1-32.2-2	1	nozzle	D=1,8 - M8x1 DIN 906 00150953	Bosch Rexroth	01.092770
+H1-0.21	1	control valve	AB21-22/10-15 R900002427	Bosch Rexroth	01.101087	+H1-32.3	1	pressure reducing valve	ZDR 6 DP 2-4X/75 YM NG6, 75bar R900483786	Bosch Rexroth	01.081132
+H1-0.22	1	ball valve	DN15, PN32, G1/2 MLG V 032.715	Böhmer	01.077305		1	measuring connection	EMA3/1/4EDCF G1/4A - M16	Parker	01.084632
+H1-0.23	1	ball valve	DN15, PN32, G1/2 MLG V 032.715	Böhmer	01.077305	+H1-32.4	1	directional control valve	4WE 6 Q 6X/-EG24N9K73L/SO407, 8W	Bosch Rexroth	01.098703
+H1-0.24	1	measuring device	0-250bar	Hydrotechnik	13.021566	+TM-32.11	1	hose line	DIN 20066-2SC10-NN-1320-P 462- 6-1320	Parker	01.100211

Änderungen nur im CAD-Original!
Changes in CAD only!
Mudanças no original CAD somente!

© Copyright reserved - Gebr. HELLER Maschinenfabrik GmbH, D-72822 Nürtingen
Schutzvermerk nach DIN 34 beachten!
Attention! Observe DIN 34
Atenção! Leia o DIN 34

← &/2

0.a →

ART DER AENDERUNG/REVISION/DESCRIÇÃO DE ALTERAÇÃO		Index	ZONE/ZONA	DATUM/DATE	NAME/NOME	PROJ./PROJ/ PROJ.	54793.00	HELLER	KUNDE/CUSTOMER/CLIENTE	PLAN/PLAN/PLANO	
CAD-System		URSPPR./ORIG.	GEPR./CHECK./REG.			M-NR/M-NO/ M-NO	M54793		Paccar, Columbus USA	project	MP.05479300_F
ePLAN 2.2.5		ERS./REP.	BEARB./CHG./ALT.	04.04.2017	AHFE/ZAJ	TYP/TYPE/ TIPO	H 10000 PC	Device tag list hydraulics	INV-NR/INV-NO/NO-INV	Machine	=M54793
		ERS.D./REP.W.	GEZ./DRAWN/DES.	04.04.2017	AHFE/ZAJ	WERKSTÜCK/ PART/PEÇA				Document type	&H hydraulic diagram
									Mounting position		
									Page name	0	

Device tag list

Heller_Dynam_Bed_2L2C

device tag	number	denomination	Type	Manufacturer	Heller no.	device tag	number	denomination	Type	Manufacturer	Heller no.
+TM-32.12	1	hose line	DIN 20066-2SC10-NN-1050-P 462- 6-1050	Parker	01.100215	+APC-42.13	1	directional control valve	WRF 22 F06 P 040 G1	Parker	01.099110
+TM-32.13	1	hydraulic cylinder	CDT3MX3/25/12/350Z20B14HXETWW R901374280	Bosch Rexroth	01.108914	+APC-42.14	1	manifold	rechts	Heller Maschinenfabrik	00.880051
+H1-33.2	1	check valve	Z1S 6 P05-4X/V R901086051	Bosch Rexroth	01.081137	+APC-42.15	1	directional control valve	WRF 22 F06 P 040 G1	Parker	01.099110
+H1-33.3	1	intermediate plate	HSZ 06 A085-3X/M00 R900514667	Bosch Rexroth	01.092767	+APC-42.16	1	manifold	G 342/01 - G3/8 R900424448	Bosch Rexroth	01.099824
+H1-33.3-1	1	nozzle	D=2,5 - M8x1 DIN 906 00137445	Bosch Rexroth	01.093578	+APC-42.17	1	flow control valve	2FRM 6B3 6-3./6Q R/V	Bosch Rexroth	01.087650
+H1-33.3-2	1	nozzle	D=1,8 - M8x1 DIN 906 00150953	Bosch Rexroth	01.092770	+APC-42.18	1	manifold	G 342/01 - G3/8 R900424448	Bosch Rexroth	01.099824
+H1-33.4	1	pressure reducing valve	ZDR 6 DP 2-4X/75 YM NG6, 75bar R900483786	Bosch Rexroth	01.081132	+APC-42.19	1	flow control valve	2FRM 6B3 6-3./6Q R/V	Bosch Rexroth	01.087650
	1	measuring connection	EMA3/1/4EDCF G1/4A - M16	Parker	01.084632	+APC-42.20	1	manifold	G 342/01 - G3/8 R900424448	Bosch Rexroth	01.099824
+H1-33.5	1	directional control valve	4WE 6 J 6X/-EG24N9K73L/SO407, 8W	Bosch Rexroth	01.098704	+APC-42.21	1	series valve	DZ 6 DP2-5./210YM NG6, 210bar	Bosch Rexroth	01.081135
+TM-33.11	1	hose line	DIN 20066-2SC10-NN-1500-P 462- 6-1500	Parker	01.100681	+APC-42.22	1	manifold	G 342/01 - G3/8 R900424448	Bosch Rexroth	01.099824
+TM-33.12	1	hose line	DIN 20066-2SC10-NN-1200-P 462- 6-1200	Parker	01.099727	+APC-42.23	1	series valve	DZ 6 DP2-5./210YM NG6, 210bar	Bosch Rexroth	01.081135
+TM-33.13	1	hydraulic cylinder	CHNB-25-289-DCM 2430 M D=25/12 H289	SMC	01.106047	+H2-43.1	1	manifold	SA 101 DS2 10.500381	Heller Maschinenfabrik	13.500667
+MT-41.1	1	rotary feed table		Heller Maschinenfabrik		+H2-43.2	1	throttle check valve	Z2FS 10-5/3X	Bosch Rexroth	01.099160
+H1-41.2	1	intermediate plate	HSZ 06 A028-3X/M01 R900515514	Bosch Rexroth	01.096731	+H2-43.3	1	pilot operated check valve	Z2S 10-1-3X/-	Bosch Rexroth	01.087739
+H1-41.4	1	pressure reducing valve	ZDR 6 DP 2-4X/75 YM NG6, 75bar R900483786	Bosch Rexroth	01.081132	+H2-43.4	1	directional control valve	4WEH10-Q4X/6EG24N9ETK73L/B10-SO803	Bosch Rexroth	01.094239
+H1-41.5	1	directional control valve	4WE 6 D 6X/-EG24N9K73L/SO407, 8W	Bosch Rexroth	01.098700	+H2-43.5	1	measuring connection	EMA3/1/2EDCF G1/2A - M16	Parker	01.107205
+H1-41.6	1	measuring connection	EMA3/3/8EDCF	Parker	01.084633	+H2-43.6	1	measuring connection	EMA3/1/2EDCF G1/2A - M16	Parker	01.107205
+MT-41.11	1	hose line	DIN 20066-2SC 8-NN-3250-P 462- 5-3250	Parker	01.101939	+APC-43.10	1				99.99990
+H2-42.1	1	manifold	SA 064 DS1 10.500269	Heller Maschinenfabrik	13.500398	+H1-45.1	1	check valve	Z1S 6 T05-4X/V R901086058	Bosch Rexroth	01.084380
+H2-42.2	1	intermediate plate	HSZ 06 A327-3X/M01 R900523147	Bosch Rexroth	01.105656	+H1-45.2	1	intermediate plate	HSZ 06 A085-3X/M00 R900514667	Bosch Rexroth	01.092767
+H2-42.3	1	throttle check valve	Z2FS 6 2-4X/1QV R900481623	Bosch Rexroth	01.093456	+H1-45.2-1	1	nozzle	D=3,2 - M8x1 DIN 906 R900855716	Bosch Rexroth	01.102282
+H2-42.4	1	directional control valve	4WE 6 Q 6X/-EG24N9K73L/SO407, 8W	Bosch Rexroth	01.098703	+H1-45.3	1	pressure reducing valve	ZDR 6 DP 2-4X/75 YM NG6, 75bar R900483786	Bosch Rexroth	01.081132
+H2-42.5	1	measuring connection	EMA3/3/8EDCF	Parker	01.084633	+H1-45.4	1	directional control valve	4WE 6 D46 6X/OFEG24N9K73L/SO407, 8W	Bosch Rexroth	01.098699
+H2-42.6	1	measuring connection	EMA3/3/8EDCF	Parker	01.084633	+H1-45.5	1	pressure switch	PN7092 0-100bar, G1/4	IFM Electronic	01.111726
+H2-42.7	1	throttle valve	DV-16-01.X/0	Flutec	01.065821	+H1-45.6	1	hose line	S100-CR-CR-....	Hydrotechnik	
+H2-42.8	1	check valve	RHZ22LREDOMD-CF	Parker	01.060990	+H1-45.7	1	volume flow meter	VCA 2 FC R1/69 P.0139310001	Kracht	01.083920
+APC-42.9	1	hydraulic motor	112-A-036-AT-0	Parker	01.100664	+MT-45.11	1	hose line	DIN 20066-2SC10-NN-3250-P 462- 6-3250	Parker	01.099733
+APC-42.12	1	manifold	links	Heller Maschinenfabrik	00.880052	+MT-45.12	1	hose line	DIN 20066-2SC10-NN-3250-P 462- 6-3250	Parker	01.099733

Änderungen nur im CAD-Original!
 Changes in CAD only!
 Mudanças no original CAD somente!

© Copyright reserved - Gebr. HELLER Maschinenfabrik GmbH, D-72822 Nürtingen
 Schutzvermerk nach DIN 34 beachten!
 Attention! Observe DIN 34
 Atenção! Leia a DIN 34

ART DER AENDERUNG/REVISION/DESCRIÇÃO DE ALTERAÇÃO		Index	ZONE/ZONA	DATUM/DATE	NAME/NOME	PROJ./PROJ/ PROJ.	54793.00	<div style="text-align: center; font-weight: bold; font-size: 1.2em;">HELLER</div> KUNDE/CUSTOMER/CLIENTE Paccar, Columbus USA	PLAN/PLAN/PLANO project Machine Document type Mounting position Page name	MP.05479300_F =M54793 &H hydraulic diagram 0.a
CAD-System		URSPPR./ORIG.	GEPR./CHECK./REG.			M-NR/M-NO/ M-NO	M54793			
ePLAN 2.2.5		ERS./REP.	BEARB./CHG./ALT.	04.04.2017	AHFE/ZAJ	TYP/TYPE/ TIPO	H 10000 PC			
		ERS.D./REP.W.	GEZ./DRAWN/DES.	04.04.2017	AHFE/ZAJ	WERKSTÜCK/ PART/PEÇA		BENENNUNG/NAME/DENOMINAÇÃO Device tag list hydraulics		A3

Device tag list

Heller_Dynam_Bed_2L2C

device tag	number	denomination	Type	Manufacturer	Heller no.
+H2-46.3	1	directional control valve	4 WP 6 D 6X/ N	Bosch Rexroth	01.095787
+H1-60.1	1	manifold	SA 066 DS1 10.500275	Heller Maschinenfabrik	13.500403
+H1-60.2	1	cover plate	110 115-11	Gutekunst	01.105658
+H1-60.9	1	check valve	RHD12LOMD-CF	Parker	01.002260
+H1-61.2	1	intermediate plate	HSZ 06 A027-3X/M01 R900515513	Bosch Rexroth	01.105657
+H1-61.3	1	auxiliary valve	ZDZ 6 DP 2- 4X/210-170YM 170bar	Bosch Rexroth	01.098138
+H1-61.5	1	directional control valve	4WE 6 D 6X/-EG24N9K73L/SO407, 8W	Bosch Rexroth	01.098700
+H1-61.6	1	measuring connection	EMA3/3/8EDCF	Parker	01.084633
+H1-61.8	1	check valve	RHD10LOMD-CF	Parker	01.002259
+H1-61.10	1	hose line	S100-CR-CR-....	Hydrotechnik	
+H1-61.11	1	pressure switch	PN7071 0-250bar, G1/4	IFM Electronic	01.111727
+MT-61.12	1	hose line	DIN 20066-2SC 8-NN-3250-P 462- 5-3250	Parker	01.101939
+MT-61.13	1	hose line	DIN 20066-2SC 8-NN-3250-P 462- 5-3250	Parker	01.101939
+MT-61.14	1	hose line	DIN 20066-2SC 8-NN-3250-P 462- 5-3250	Parker	01.101939
+WLS-70.1	1	loading station		Heller Maschinenfabrik	
+WLS-70.1-1	1	pneumatic cylinder	D40/16x25H 0 822 341 001	AVENTICS	01.099779
+WLS-70.1-2	1	pneumatic cylinder	D25/10x25H 0 822 084 202	AVENTICS	01.095261
+H2-70.2	1	intermediate plate	HSZ 06 A027-3X/M01 R900515513	Bosch Rexroth	01.105657
+H2-70.3	1	check valve	Z1S 6 T05-4X/V R901086058	Bosch Rexroth	01.084380
+H2-70.4	1	auxiliary valve	ZDZ 6 DP 2- 4X/210-180YM 180bar	Bosch Rexroth	01.098139
+H2-70.6	1	directional control valve	4WE 6 J 6X/-EG24N9K73L/SO407, 8W	Bosch Rexroth	01.098704
+H2-70.7	1	pressure switch	PN7071 0-250bar, G1/4	IFM Electronic	01.111727
+H2-70.8	1	check valve	RHD10LOMD-CF	Parker	01.002259
+H2-70.10	1	measuring connection	EMA3/3/8EDCF	Parker	01.084633
+H2-71.2	1	cover plate	110 115-11	Gutekunst	01.105658
+MT-103.12	1	plastic pipe	PA 10x1 1 820 712 105	AVENTICS	01.093306
+MT-103.14	1	check valve	T55C2800 G1/4i	Norgren	01.095313
+MU-107.10	1	plastic pipe	PA 10x1 1 820 712 105	AVENTICS	01.093306

device tag	number	denomination	Type	Manufacturer	Heller no.
+MU-111.10	1	plastic pipe	PA 12x1,5 1 820 712 103	AVENTICS	01.093304
+MU-121.10	1	plastic pipe	PA 6x1 1 820 712 101	AVENTICS	01.093302
+WLS-141.11	1	throttle check valve	G1/4 Serie CC02 0 821 200 205	AVENTICS	01.086506
+MT-161.11	1	plastic pipe	PA 14x1,5 1 820 712 104	AVENTICS	01.093305
+MU-210.20	1	oil/water heat exchanger	TPL00-K-10-12 G1	Funke	01.100384
+MU-410.7	1	hose	Oilpress N/L 20 25x36 20bar IH30832006/40	Parker	01.100022

Änderungen nur im CAD-Original!
Changes in CAD only!
Mudanças no original CAD somente!

© Copyright reserved - Gebr. HELLER Maschinenfabrik GmbH, D-72822 Nürtingen
Schutzvermerk nach DIN 34 beachten!
Attention! Observe DIN 34
Atenção! Atenção DIN 34

← 0.a

+H1/1 →

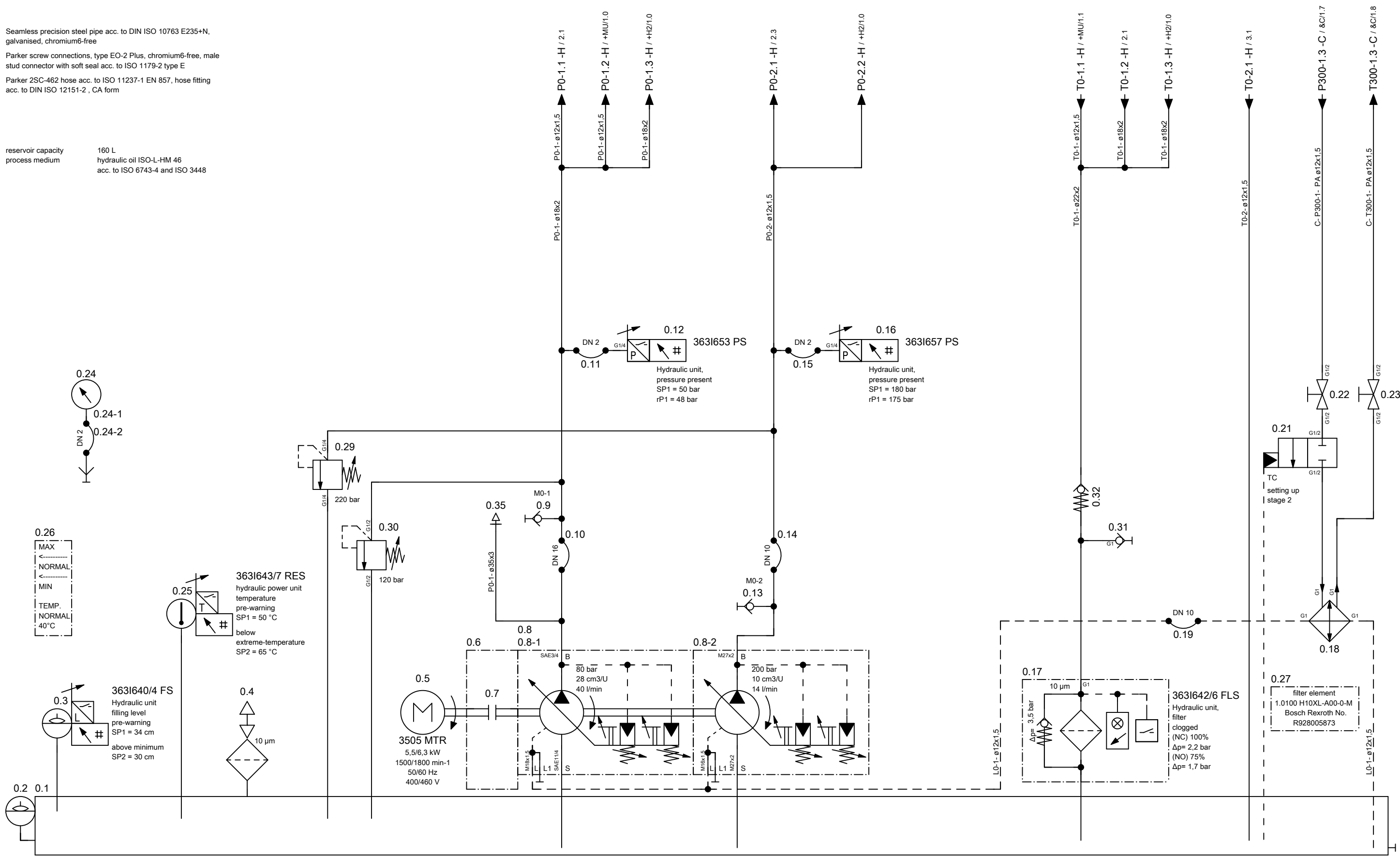
ART DER ÄNDERUNG/REVISION/DESCRIÇÃO DE ALTERAÇÃO		Index	ZONE/ZONA	DATUM/DATE	NAME/NOME	PROJ./PROJ/ PROJ.	54793.00	HELLER	KUNDE/CUSTOMER/CLIENTE	PLAN/PLAN/PLANO	
CAD-System		URSPPR./ORIG.	GEPR./CHECK./REG.			M-NR/M-NO/ M-NO	M54793		Paccar, Columbus USA	project	MP.05479300_F
ePLAN 2.2.5		ERS./REP.	BEARB./CHG./ALT.	04.04.2017	AHFE/ZAJ	TYP/TYPE/ TIPO	H 10000 PC	Device tag list hydraulics	INV-NR/INV-NO/NO-INV	Machine	=M54793
		ERS.D./REP.W.	GEZ./DRAWN/DES.	04.04.2017	AHFE/ZAJ	WERKSTÜCK/ PART/PEÇA				Document type	&H hydraulic diagram
									Mounting position		
									Page name	0.b	

Änderungen nur im CAD-Original!
 Changes in CAD only!
 Mudanças no original CAD somente!
 © Copyright reserved - Gebr. HELLER Maschinenfabrik GmbH, D-72822 Nürtingen
 Schutzvermerk nach DIN 34 beachten!
 Attention! Observe DIN 34
 Atenção! Leia a DIN 34

Seamless precision steel pipe acc. to DIN ISO 10763 E235+N,
 galvanised, chromium6-free
 Parker screw connections, type EO-2 Plus, chromium6-free, male
 stud connector with soft seal acc. to ISO 1179-2 type E
 Parker 2SC-462 hose acc. to ISO 11237-1 EN 857, hose fitting
 acc. to DIN ISO 12151-2, CA form

reservoir capacity 160 L
 process medium hydraulic oil ISO-L-HM 46
 acc. to ISO 6743-4 and ISO 3448

0 hydraulic power unit

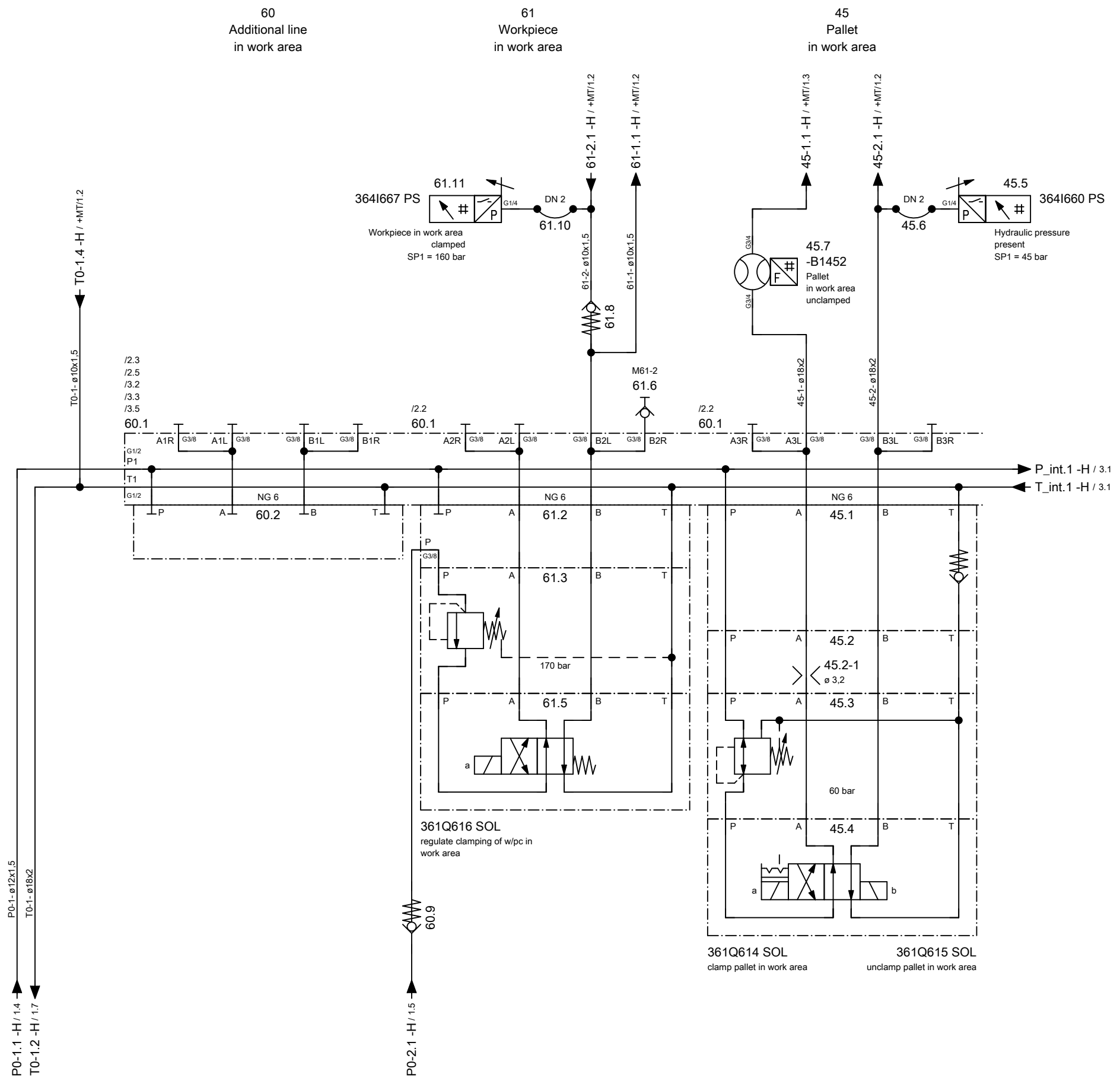


← +/0.b 2 →

ART DER AENDERUNG/REVISION/DESCRIÇÃO DE ALTERAÇÃO				Index	ZONE/ZONA	DATUM/DATE	NAME/NOME	PROJ./PROJ./PROJ.	54793.00	HELLER	KUNDE/CUSTOMER/CLIENTE	PLAN/PLAN/PLANO	
CAD-System				URSPPR./ORIG.	GEPR./CHECK./REG.			M-NR/M-NO/ M-NO	M54793		Paccar, Columbus USA	project	MP.05479300_F
ePLAN 2.2.5				ERS./REP.	BEARB./CHG./ALT.	04.04.2017	AHFE/ZAJ	TYP/TYPE/ TIPO	H 10000 PC		INV-NR/INV-NO/NO-INV	Machine	=M54793
				ERS.D./REP.W.	GEZ./DRAWN/DES.	09.09.2015	AHFE/HOP	WERKSTÜCK/ PART/PEÇA		13.503932, 13.503916, 13.503921, 13.503925	Document type	&H hydraulic diagram	
											Mounting position	+H1 HELP1	
											Page name	1	

Änderungen nur im CAD-Original!
Changes in CAD only!
Mudanças no original CAD somente!

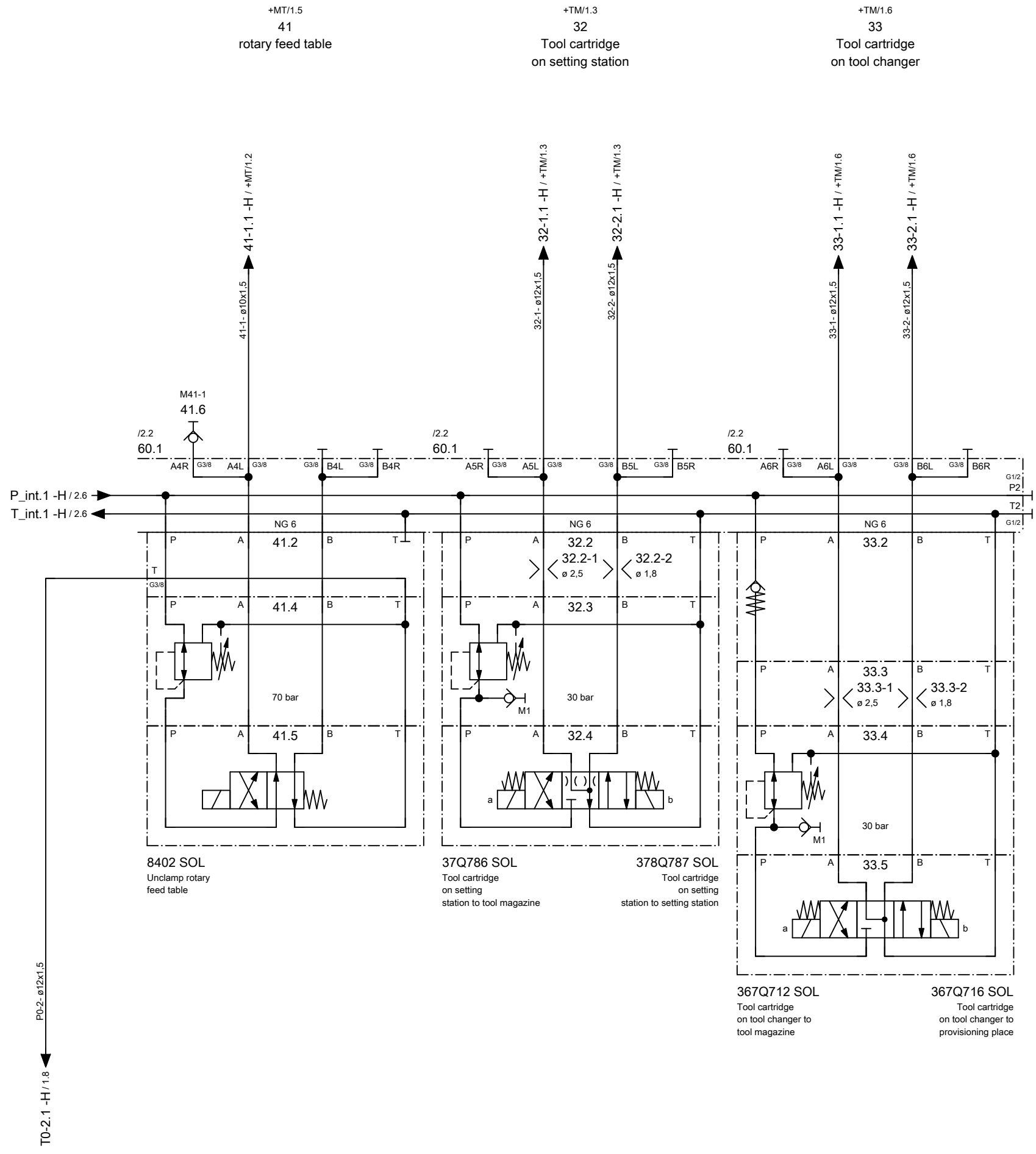
© Copyright reserved - Gebr. HELLER Maschinenfabrik GmbH, D-72822 Nürtingen
Schutzvermerk nach DIN 34 beachten!
Attention! Observe DIN 34
Atenção! Atenção DIN 34



ART DER AENDERUNG/REVISION/DESCRIÇÃO DE ALTERAÇÃO				Index	ZONE/ZONA	DATUM/DATE	NAME/NOME	PROJ./PROJ./PROJ.	54793.00	HELLER	KUNDE/CUSTOMER/CLIENTE	PLAN/PLAN/PLANO	
CAD-System				URSPR./ORIG.	GEPR./CHECK./REG.			M-NR/M-NO/ M-NO	M54793		Paccar, Columbus USA	project	MP.05479300_F
ePLAN 2.2.5				ERS./REP.	BEARB./CHG./ALT.	04.04.2017	AHFE/ZAJ	TYP/TYPE/ TIPO	H 10000 PC		INV-NR/INV-NO/NO-INV	Machine	=M54793
ERS.D./REP.W.				GEZ./DRAWN/DES.		09.09.2015	AHFE/HOP	WERKSTÜCK/ PART/PEÇA		14.502196, 13.503929, 13.503931	Mounting position	&H hydraulic diagram +H1 HELP1	
											Page name	2	

Änderungen nur im CAD-Original!
Changes in CAD only!
Mudanças no original CAD somente!

© Copyright reserved - Gebr. HELLER Maschinenfabrik GmbH, D-72822 Nürtingen
Schutzvermerk nach DIN 34 beachten!
Attention! Observe DIN 34
Atenção! Atenção DIN 34



← 2

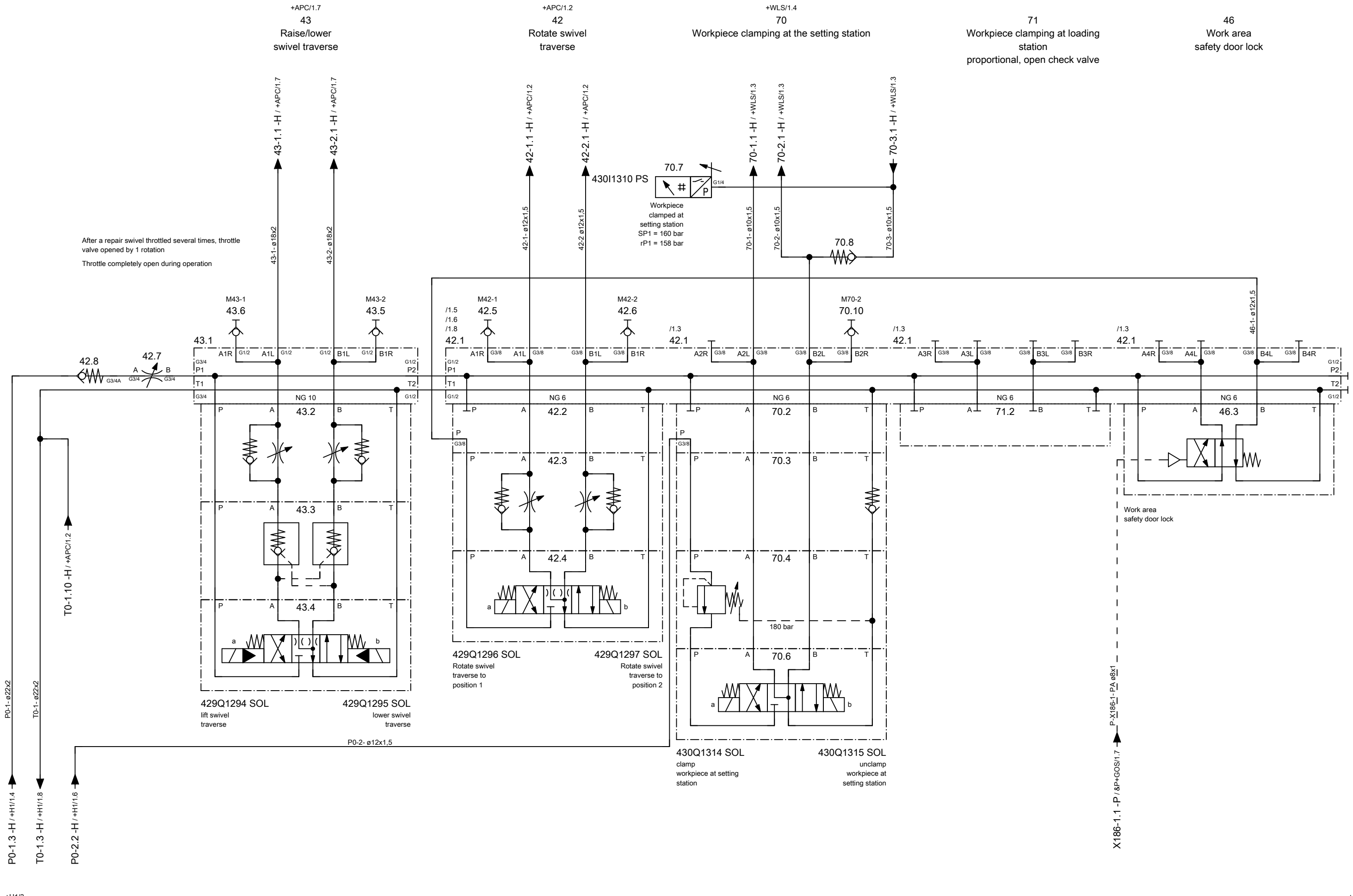
+H2/1 →

ART DER AENDERUNG/REVISION/DESCRIÇÃO DE ALTERAÇÃO				Index	ZONE/ZONA	DATUM/DATE	NAME/NOME	PROJ./PROJ./PROJ.	HELLER		KUNDE/CUSTOMER/CLIENTE	PLAN/PLAN/PLANO		
CAD-System				URSPR./ORIG.	GEPR./CHECK./REG.			M-NR./M-NO/ M-NO			M54793	Paccar, Columbus USA	project	MP.05479300_F
ePLAN 2.2.5				ERS./REP.	BEARB./CHG./ALT.	04.04.2017	AHFE/ZAJ	TYP./TYPE/ TIPO	H 10000 PC	BENENNUNG/NAME/DENOMINAÇÃO		INV-NR./INV-NO/NO-INV	Machine	=M54793
				ERS.D./REP.W.	GEZ./DRAWN/DES.	17.09.2015	AHFE/HOP	WERKSTÜCK/ PART/PEÇA		hydraulic diagram		13.503573, 13.502964, 13.503778	Document type	&H hydraulic diagram
												Mounting position	+H1 HELP1	
												Page name	3	

Heller_2L

Änderungen nur im CAD-Original!
Changes in CAD only!
Mudanças no original CAD somente!

© Copyright reserved - Gebr. HELLER Maschinenfabrik GmbH, D-72822 Nürtingen
Schutzvermerk nach DIN 34 beachten!
Attention! Observe DIN 34
Atenção! Atenção DIN 34



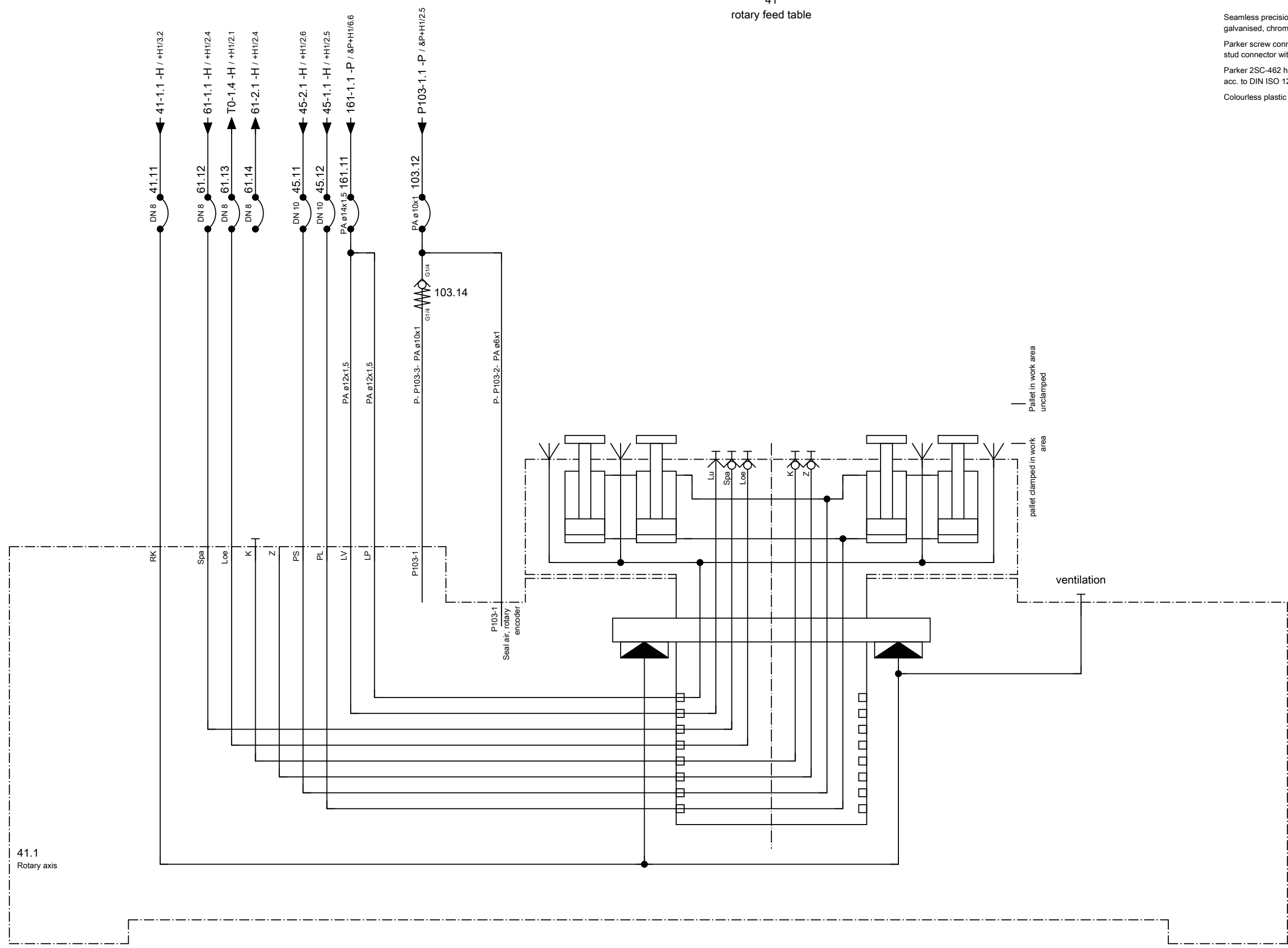
ART DER ÄNDERUNG/REVISION/DESCRIÇÃO DE ALTERAÇÃO				Index	ZONE/ZONA	DATUM/DATE	NAME/NOME	PROJ./PROJ./PROJ.	54793.00	HELLER	KUNDE/CUSTOMER/CLIENTE	PLAN/PLAN/PLANO		
CAD-System				URSPR./ORIG.	GEPR./CHECK./REG.			M-NR/M-NO/ M-NO	M54793		Paccar, Columbus USA	project	MP.05479300_F	
ePLAN 2.2.5				ERS./REP.	BEARB./CHG./ALT.	04.04.2017	AHFE/ZAJ	TYP/TYPE/ TIPO	H 10000 PC	hydraulic diagram	INV-NR/INV-NO/NO-INV	Machine	=M54793	
				ERS.D./REP.W.	GEZ./DRAWN/DES.	09.09.2015	AHFE/HOP	WERKSTÜCK/ PART/PEÇA			14.502208, 13.503930, 13.502961	Document type	&H hydraulic diagram	
											Mounting position	+H2 HELP2	Page name	1

Änderungen nur im CAD-Original!
Changes in CAD only!
Mudanças no original CAD somente!

© Copyright reserved - Gebr. HELLER Maschinenfabrik GmbH, D-72822 Nürtingen
Schutzvermerk nach DIN 34 beachten!
Attention! Observe DIN 34
Atenção! Atenção DIN 34

+H1/3.2
41
rotary feed table

Seamless precision steel pipe acc. to DIN ISO 10763 E235+N, galvanised, chromium6-free
Parker screw connections, type EO-2 Plus, chromium6-free, male stud connector with soft seal acc. to ISO 1179-2 type E
Parker 2SC-462 hose acc. to ISO 11237-1 EN 857, hose fitting acc. to DIN ISO 12151-2, CA form
Colourless plastic pipes PA, AVENTICS, push-in fittings, Steckfix



41.1
Rotary axis

ventilation

pallet clamped in work area
pallet in work area unclamped

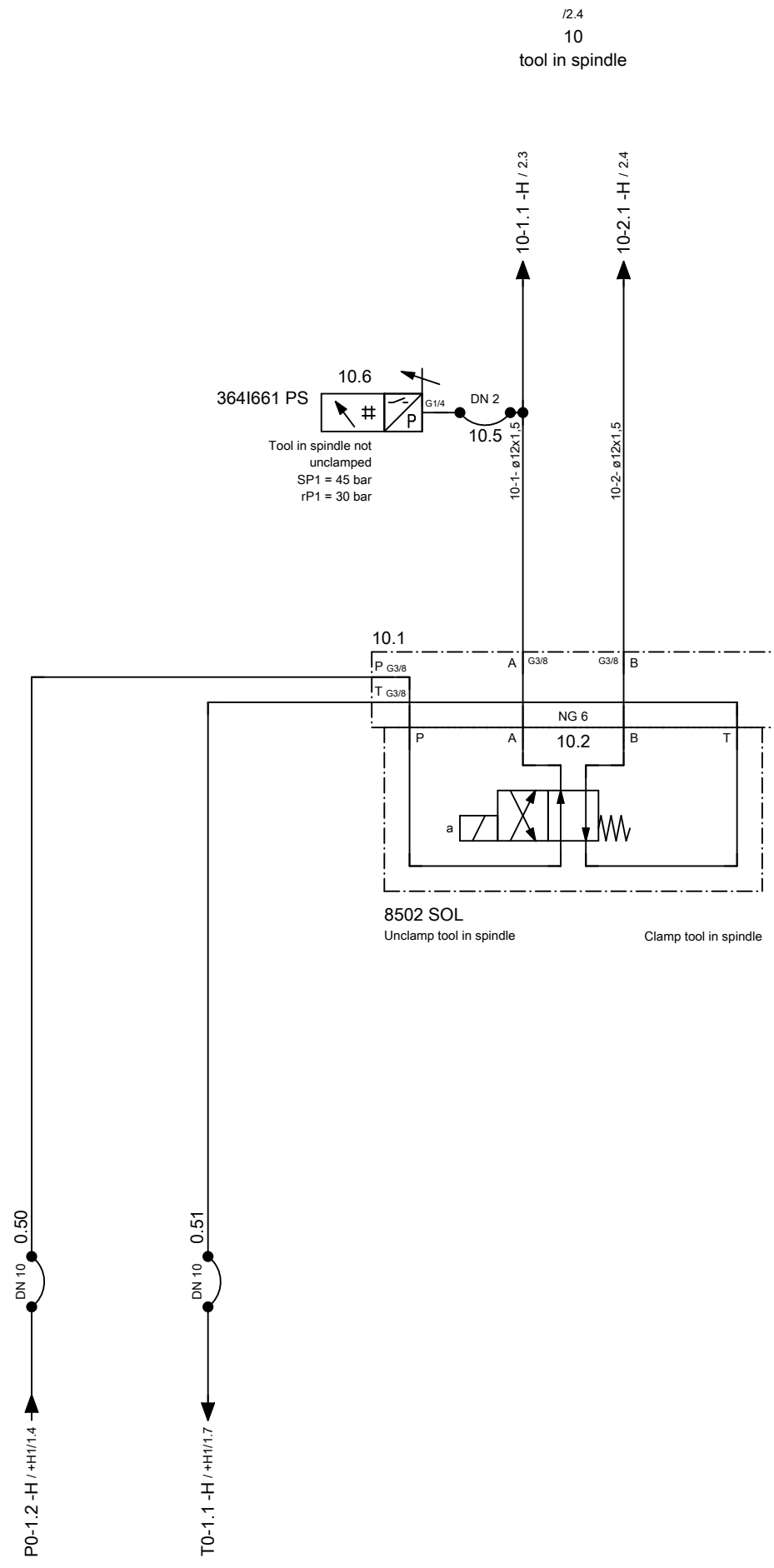
← +H2/1 +MU/1 →

ART DER AENDERUNG/REVISION/DESCRIÇÃO DE ALTERAÇÃO				Index	ZONE/ZONA	DATUM/DATE	NAME/NOME	PROJ./PROJ./PROJ.	54793.00	HELLER	KUNDE/CUSTOMER/CLIENTE	PLAN/PLAN/PLANO	
CAD-System				URSPR./ORIG.	GEPR./CHECK./REG.			M-NR/M-NO/ M-NO	M54793		Paccar, Columbus USA	project	MP.05479300_F
ePLAN 2.2.5				ERS./REP.	BEARB./CHG./ALT.	04.04.2017	AHFE/ZAJ	TYP/TYPE/ TIPO	H 10000 PC	hydraulic diagram	INV-NR/INV-NO/NO-INV	Machine	=M54793
				ERS.D./REP.W.	GEZ./DRAWN/DES.	09.09.2015	AHFE/HOP	WERKSTÜCK/ PART/PEÇA			Document type	&H	hydraulic diagram
											Mounting position	+MT	table
											Page name	1	A3

Heller_2L

Änderungen nur im CAD-Original!
Changes in CAD only!
Mudanças no original CAD somente!

© Copyright reserved - Gebr. HELLER Maschinenfabrik GmbH, D-72822 Nürtingen
Schutzvermerk nach DIN 34 beachten!
Attention! Observe DIN 34
Atenção! Atenção DIN 34



← MT/1

2 →

ART DER AENDERUNG/REVISION/DESCRIÇÃO DE ALTERAÇÃO		Index	ZONE/ZONA	DATUM/DATE	NAME/NOME
CAD-System	URSPR./ORIG.	GEPR./CHECK./REG.			
ePLAN 2.2.5	ERS./REP.	BEARB./CHG./ALT.	04.04.2017	AHFE/ZAJ	
	ERS.D./REP.W.	GEZ./DRAWN/DES.	09.09.2015	AHFE/HOP	

PROJ./PROJ./PROJ.	54793.00
M-NR./M-NO/ M-NO	M54793
TYP./TYPE/ TIPO	H 10000 PC
WERKSTÜCK/ PART/PEÇA	

HELLER	KUNDE/CUSTOMER/CLIENTE	Paccar, Columbus USA
	BENENNUNG/NAME/DENOMINAÇÃO	hydraulic diagram

INV-NR./INV-NO/NO-INV	14.502392
-----------------------	-----------

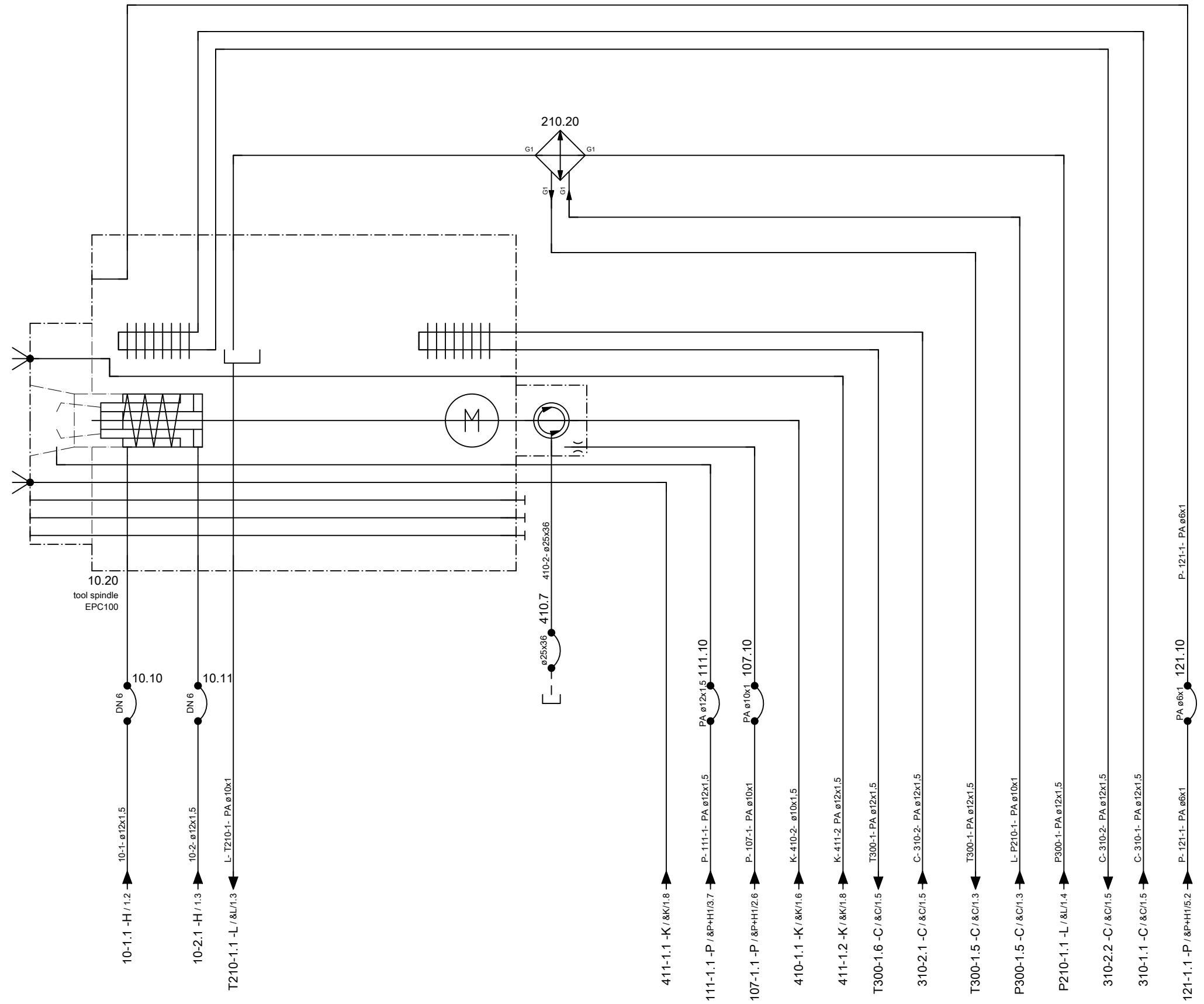
PLAN/PLAN/PLANO	project	MP.05479300_F
Machine		=M54793
Document type	&H	hydraulic diagram
Mounting position	+MU	unit
Page name	1	

Änderungen nur im CAD-Original!
Changes in CAD only!
Mudanças no original CAD somente!

© Copyright reserved - Gebr. HELLER Maschinenfabrik GmbH, D-72822 Nürtingen
Schutzvermerk nach DIN 34 beachten!
Attention! Observe DIN 34
Atenção! Atenção DIN 34

/1.2
10
tool in spindle

&L/1.4
210
gear lubrication



reservoir capacity 5 L
process medium lubrication oil ISO-L-CKC 46
acc. to ISO 6743-6 and ISO 3448

← 1

+TM/1 →

ART DER AENDERUNG/REVISION/DESCRIÇÃO DE ALTERAÇÃO		Index	ZONE/ZONA	DATUM/DATE	NAME/NOME
ePLAN 2.2.5	URSPR./ORIG.	GEPR./CHECK./REG.			
	ERS./REP.	BEARB./CHG./ALT.	18.10.2016	AHFE/HJ001	
	ERS.D./REP.W.	GEZ./DRAWN/DES.	09.09.2015	AHFE/HOP	
PROJ./PROJ./PROJ.		54793.00		M-NR/M-NO/ M-NO M54793	
TYP/TYPE/ TIPO		H 10000 PC		WERKSTÜCK/ PART/PEÇA	

HELLER

hydraulic diagram

KUNDE/CUSTOMER/CLIENTE
Paccar, Columbus USA

INV-NR/INV-NO/NO-INV

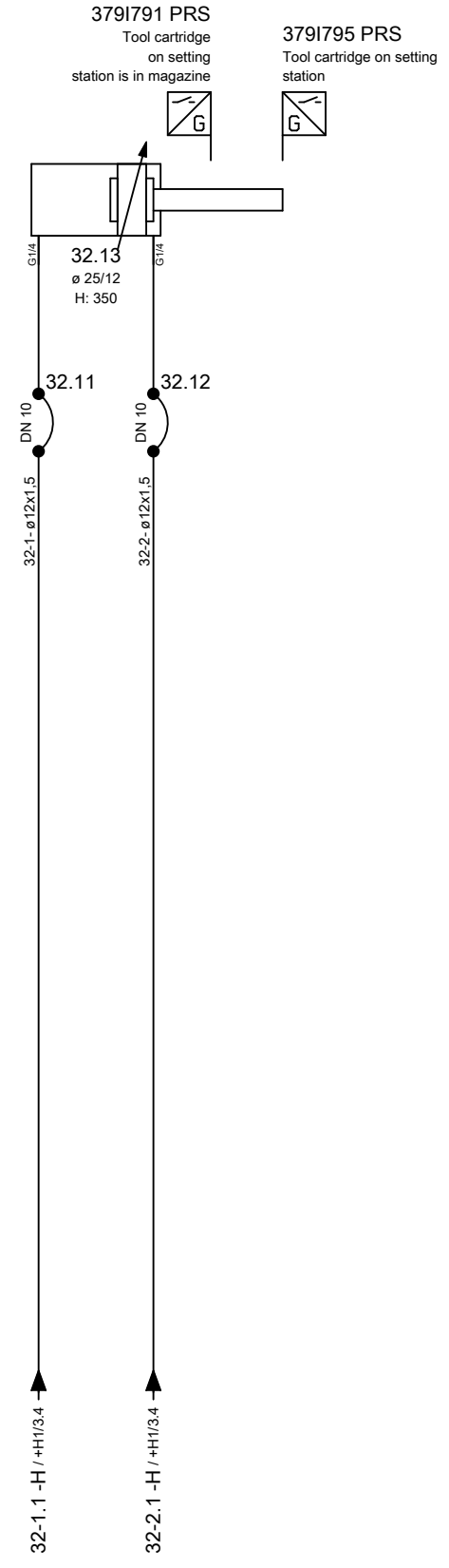
PLAN/PLAN/PLANO
project
Machine
Document type
Mounting position
Page name

MP.05479300_F
=M54793
&H hydraulic diagram
+MU unit
2

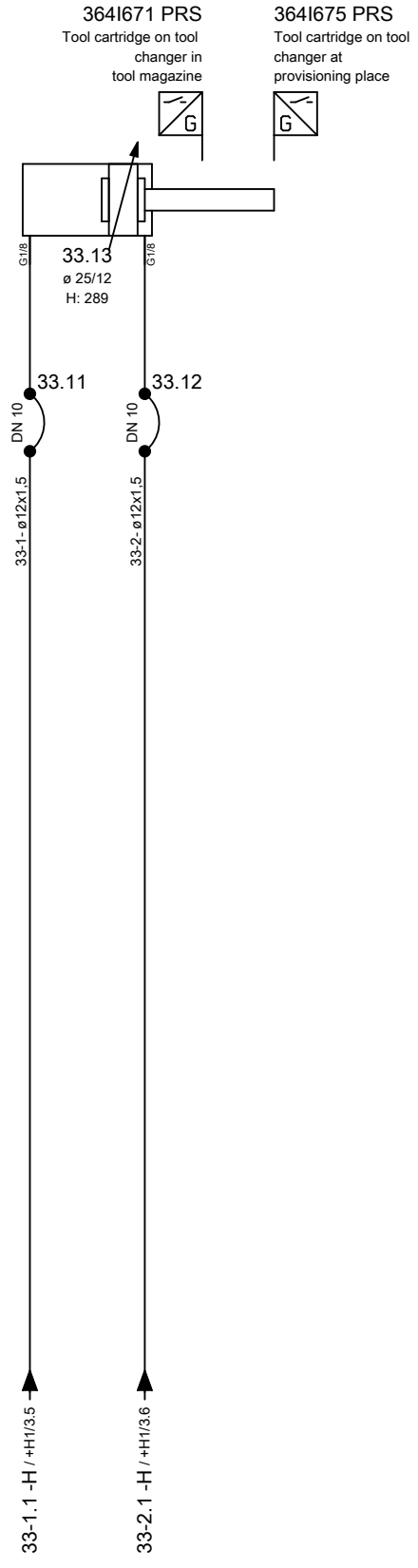
Änderungen nur im CAD-Original!
Changes in CAD only!
Mudanças no original CAD somente!

© Copyright reserved - Gebr. HELLER Maschinenfabrik GmbH, D-72622 Nürtingen
Schutzvermerk nach DIN 34 beachten!
Attention! Observe DIN 34
Atenção! Atente DIN 34

+H1/3.4
32
Tool cartridge
on setting station



+H1/3.5
33
Tool cartridge
on tool changer



← +MU/2

+APC/1 →

ART DER AENDERUNG/REVISION/DESCRIÇÃO DE ALTERAÇÃO		Index	ZONE/ZONA	DATUM/DATE	NAME/NOME	PROJ./PROJ/ PROJ.	HELLER	KUNDE/CUSTOMER/CLIENTE	PLAN/PLAN/PLANO	
CAD-System		URSPR./ORIG.	GEPR./CHECK./REG.			M-NR/M-NO/ M-NO		Paccar, Columbus USA	project	MP.05479300_F
ePLAN 2.2.5		ERS./REP.	BEARB./CHG./ALT.	04.04.2017	AHFE/ZAJ	H 10000 PC	hydraulic diagram	INV-NR/INV-NO/NO-INV	Machine	=M54793
		ERS.D./REP.W.	GEZ./DRAWN/DES.	09.09.2015	AHFE/HOP	WERKSTÜCK/ PART/PEÇA			Document type	&H
								Mounting position	+TM	tool magazine
								Page name	1	

Änderungen nur im CAD-Original!
Changes in CAD only!
Mudanças no original CAD somente!

© Copyright reserved - Gebr. HELLER Maschinenfabrik GmbH, D-72622 Nürtingen
Schutzvermerk nach DIN 34 beachten!
Attention! Observe DIN 34
Atenção! Atenção DIN 34

42
Rotate swivel
traverse

42911292 PRS
swivel traverse in position
1



42911293 PRS
swivel traverse in position
2

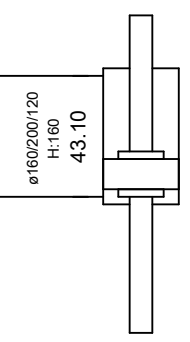
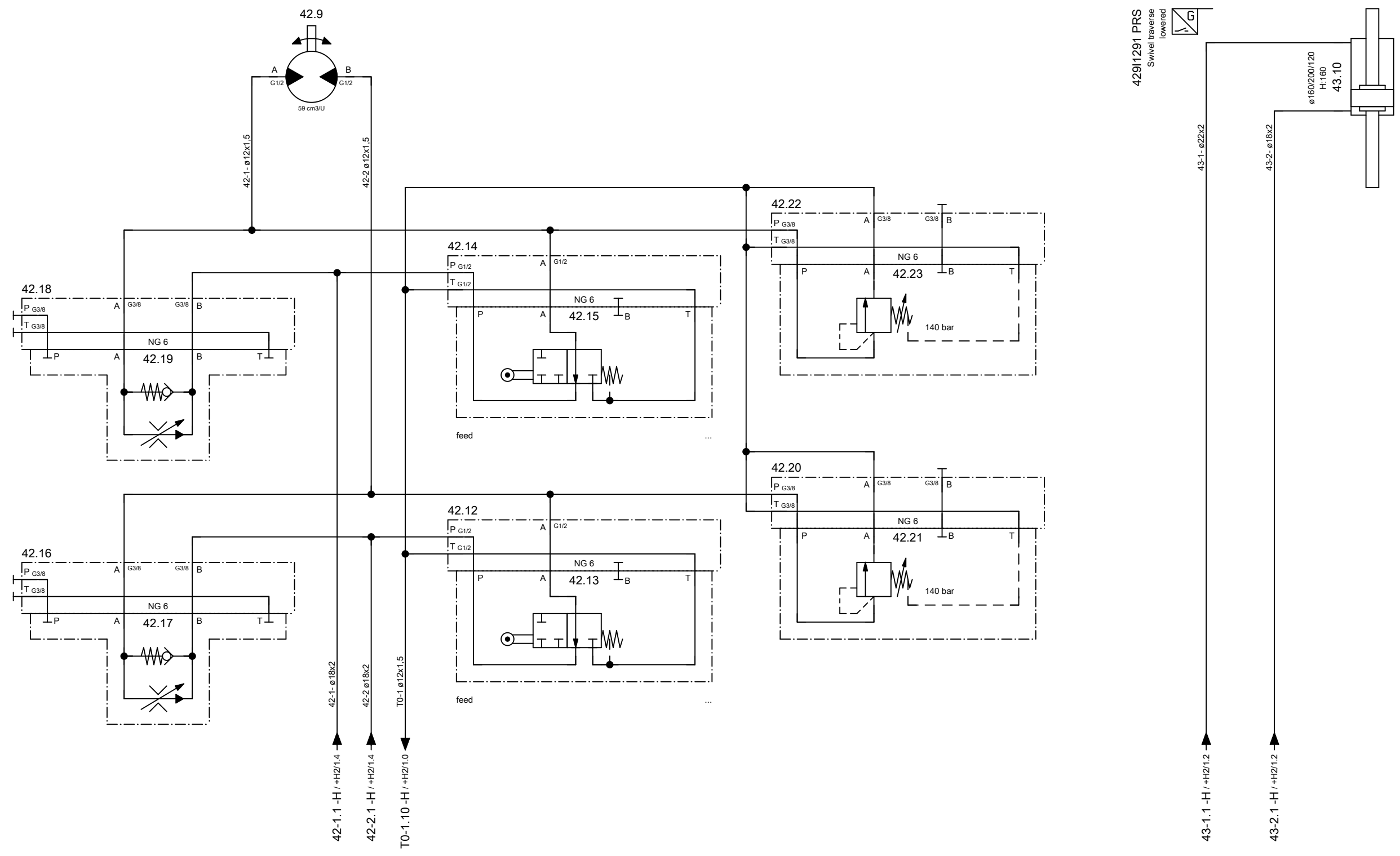


+H2/1.2
43
Raise/lower
swivel traverse

42911290 PRS
Swivel traverse
raised



42911291 PRS
Swivel traverse
lowered



← +TM/1

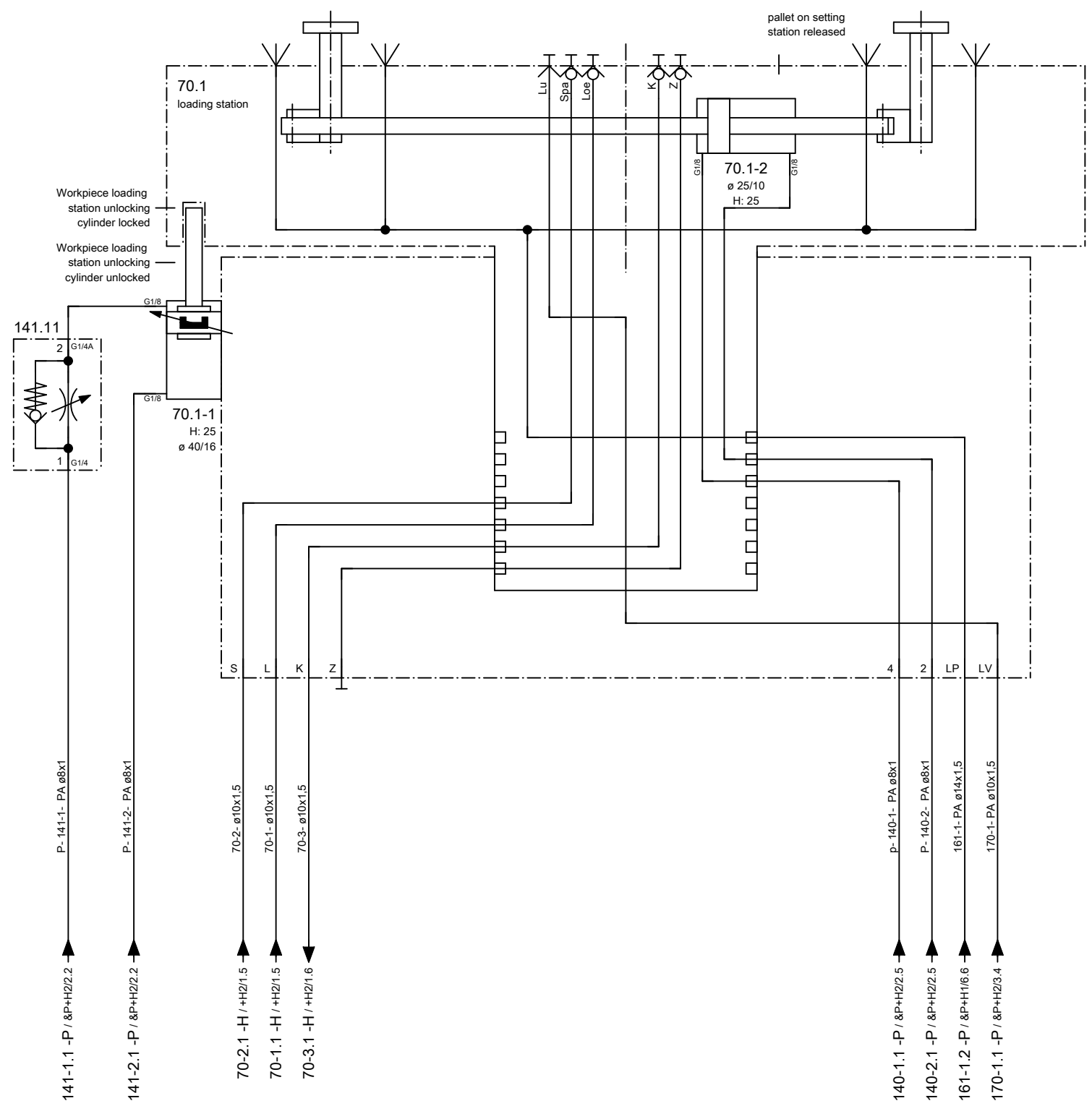
+WLS/1 →

ART DER AENDERUNG/REVISION/DESCRIÇÃO DE ALTERAÇÃO		Index	ZONE/ZONA	DATUM/DATE	NAME/NOME	PROJ./PROJ./PROJ.	<p>HELLER</p> <p>BENENNUNG/NAME/DENOMINAÇÃO</p> <p>hydraulic diagram</p>	KUNDE/CUSTOMER/CLIENTE	PLAN/PLAN/PLANO
CAD-System		URSPPR./ORIG.	GEPR./CHECK./REG.			M-NR/M-NO/ M-NO		Paccar, Columbus USA	project
ePLAN 2.2.5		ERS./REP.	BEARB./CHG./ALT.	04.04.2017	AHFE/ZAJ	M54793			Machine
		ERS.D./REP.W.	GEZ./DRAWN/DES.	17.09.2015	AHFE/HOP	H 10000 PC	INV-NR/INV-NO/NO-INV	Document type	MP.05479300_F
							13.503586	Mounting position	=M54793
								Page name	&H hydraulic diagram
									+APC pallet changer
									1

Änderungen nur im CAD-Original!
Changes in CAD only!
Mudanças no original CAD somente!

© Copyright reserved - Gebr. HELLER Maschinenfabrik GmbH, D-72622 Nürtingen
Schutzvermerk nach DIN 34 beachten!
Attention! Observe DIN 34
Atenção! Atenção DIN 34

+H2/1.5
70
Workpiece clamping at the setting station



← +APC/1

&P+0 →

ART DER AENDERUNG/REVISION/DESCRIÇÃO DE ALTERAÇÃO		Index	ZONE/ZONA	DATUM/DATE	NAME/NOME	PROJ./PROJ/ PROJ.	<p>HELLER</p> <p>KUNDE/CUSTOMER/CLIENTE Paccar, Columbus USA</p> <p>BENENNUNG/NAME/DENOMINAÇÃO hydraulic diagram</p>	<p>PLAN/PLAN/PLANO project Machine Document type Mounting position Page name</p> <p>MP.05479300_F =M54793 &H hydraulic diagram +WLS workpiece loading station 1</p>	
CAD-System		URSPR./ORIG.	GEPR./CHECK./REG.			M-NR/M-NO/ M-NO			INV-NR/INV-NO/NO-INV
ePLAN 2.2.5		ERS./REP.	BEARB./CHG./ALT.	19.09.2016	AHFE/ZAJ	M54793			
		ERS.D./REP.W.	GEZ./DRAWN/DES.	17.09.2015	AHFE/HOP	TYP/TYPE/ TIPO			
						H 10000 PC			
						WERKSTÜCK/ PART/PEÇA			

Heller_2L