

Device tag list

Heller_Dynam_Bed_2L2C

device tag	number	denomination	Type	Manufacturer	Heller no.	device tag	number	denomination	Type	Manufacturer	Heller no.
+H1-0.2	1	oil level indicator	FSA-127-1.XI-/12 700036	Hydac	01.031751	+H1-0.24-1	1	pressure gauge	EN837-23-B-063-G1/4B- 0/250bar-1,6-Glyz schwarz		01.009677
+H1-0.3	1	level sensor	LK7022	IFM Electronic	01.089136	+H1-0.24-2	1	high-pressure hose	S100-AC-AC-0063 DN2 630 mm 250bar	Hydrotechnik	01.006183
+H1-0.3-0.1	1	hydraulic power unit		Heller Maschinenfabrik		+H1-0.25	1	Evaluation unit	TR7439	IFM Electronic	01.112877
+H1-0.4	1	filler filter	ELF P 3 F 10 W1.X R900011023	Bosch Rexroth	01.100511	+H1-0.26	1	plate	min./max.	Heller Maschinenfabrik	10.500538
+H1-0.5	1	Three-phase motor	1LE1023-1CB03-4FA4-Z 1LE1023-1CB03-4FA4-Z L02+M10	Siemens	21.022591	+H1-0.27	1	plate	filter element	Heller Maschinenfabrik	10.500947
+H1-0.6	1	pump carrier	PK 300/05/21-20 103026052120	KTR	01.111926	+H1-0.29	1	pressure relief valve	DBDS6G1X/315 G1/4 R900423720	Bosch Rexroth	01.103214
	1	flange	AB33-33/PTFL 300 R900025969	Bosch Rexroth	01.106677	+H1-0.30	1	pressure relief valve	DBDS10G1X/200 G1/2 R900424140	Bosch Rexroth	01.087661
+H1-0.7	1	coupling	ROTEX 28 ST, 92-Sh A T-Pur D1=22, D2=38	KTR	01.097519	+H1-0.31	1	coupling	NS-1002-16FB	Parker	01.112291
+H1-0.8	1	pumps combination	A10VSO28DR1/31R-VPA12KB2-SO275 +A10VSO10DR/52R-VSA14N00	Bosch Rexroth	01.099999		1	protective cap	NR-100	Parker	01.112292
+H1-0.8-1	1	axial piston pump	A10VSO28DR1/31R-VPA12KB2-SO275 R902466631	Bosch Rexroth		+H1-0.32	1	check valve	RHD22LOMD-CF	Parker	01.002262
+H1-0.8-2	1	axial piston pump	A10VSO10DR/52R-VSA14N00 R902428494	Bosch Rexroth		+H1-0.35	1	vent valve	3.3518-05 002	Teves	01.002650
+H1-0.9	1	measuring connection	GMA3/18LOMDCF	Parker	01.084636		1	nipple	D8	Heller Maschinenfabrik	00.783370
+H1-0.10	1	hose line	DIN 20066-2SC16-NN- 650-P 462-10- 650	Parker	01.109210	+MU-0.50	1	hose line	DIN 20066-2SC10-NN-2800-P 462- 6-2800	Parker	01.099730
+H1-0.11	1	hose line	S100-CR-CR-....	Hydrotechnik		+MU-0.51	1	hose line	DIN 20066-2SC10-NN-2800-P 462- 6-2800	Parker	01.099730
+H1-0.12	1	pressure switch	PN7092 0-100bar, G1/4	IFM Electronic	01.111726	+MU-10.1	1	manifold	A064 R3/8 SB2	Parker	01.078214
+H1-0.13	1	measuring connection	GMA3/12LOMDCF	Parker	01.084635	+MU-10.2	1	directional control valve	4WE 6 D 6X/-EG24N9K73L/SO407, 8W	Bosch Rexroth	01.098700
+H1-0.14	1	hose line	DIN 20066-2SC10-NN- 900-P 462- 6- 900	Parker	01.099725	+MU-10.5	1	hose line	S100-CR-CR-....	Hydrotechnik	
+H1-0.15	1	hose line	S100-CR-CR-....	Hydrotechnik		+MU-10.6	1	pressure switch	PN7092 0-100bar, G1/4	IFM Electronic	01.111726
+H1-0.16	1	pressure switch	PN7071 0-250bar, G1/4	IFM Electronic	01.111727	+MU-10.10	1	hose line	381-4 SAE 100R2 DIN20022 2SN	Parker	
+H1-0.17	1	return line filter	10TEN0100-H10XLA00-P2,2-M-R4 R928041275	Bosch Rexroth	01.106168	+MU-10.11	1	hose line	381-4 SAE 100R2 DIN20022 2SN	Parker	
+H1-0.17-1	1	filter element	1.0100 H10XL-A00-0-M R928005873	Bosch Rexroth	01.106169	+MU-10.20	1	tool spindle	PC100	Heller Maschinenfabrik	
+H1-0.17-2	1	clogging indicator	WE-2SP-M12x1 R928028410	Bosch Rexroth	01.106289	+H1-32.2	1	intermediate plate	HSZ 06 A085-3X/M00 R900514667	Bosch Rexroth	01.092767
+H1-0.18	1	oil/water heat exchanger	AB32-12/00-K-006-22 R900028816	Bosch Rexroth	01.102735	+H1-32.2-1	1	nozzle	D=2,5 - M8x1 DIN 906 00137445	Bosch Rexroth	01.093578
+H1-0.19	1	hose line	DIN 20066-2SC10-NN- 650-P 462- 6- 650	Parker	01.108379	+H1-32.2-2	1	nozzle	D=1,8 - M8x1 DIN 906 00150953	Bosch Rexroth	01.092770
+H1-0.21	1	control valve	AB21-22/10-15 R900002427	Bosch Rexroth	01.101087	+H1-32.3	1	pressure reducing valve	ZDR 6 DP 2-4X/75 YM NG6, 75bar R900483786	Bosch Rexroth	01.081132
+H1-0.22	1	ball valve	DN15, PN32, G1/2 MLG V 032.715	Böhmer	01.077305		1	measuring connection	EMA3/1/4EDCF G1/4A - M16	Parker	01.084632
+H1-0.23	1	ball valve	DN15, PN32, G1/2 MLG V 032.715	Böhmer	01.077305	+H1-32.4	1	directional control valve	4WE 6 Q 6X/-EG24N9K73L/SO407, 8W	Bosch Rexroth	01.098703
+H1-0.24	1	measuring device	0-250bar	Hydrotechnik	13.021566	+TM-32.11	1	hose line	DIN 20066-2SC10-NN-1320-P 462- 6-1320	Parker	01.100211

Änderungen nur im CAD-Original!
 Changes in CAD only!
 Mudanças no original CAD somente!

© Copyright reserved - Gebr. HELLER Maschinenfabrik GmbH, D-72822 Nürtingen
 Schutzvermerk nach DIN 34 beachten!
 Attention! Observe DIN 34
 Atenção! Leia o DIN 34

ART DER AENDERUNG/REVISION/DESCRIÇÃO DE ALTERAÇÃO CAD-System		URSPR./ORIG. ERS./REP. ERS.D./REP.W.	GEPR./CHECK./REG. BEARB./CHG./ALT. GEZ./DRAWN/DES.	DATUM/DATE 04.04.2017 04.04.2017	NAME/NOME AHFE/ZAJ AHFE/ZAJ	PROJ./PROJ/ PROJ. M-NR/M-NO/ M-NO TYP/TYPE/ TIPO	54807.00 M54807 H 10000 MC - A-Axis	<div style="text-align: center; font-weight: bold; font-size: 1.2em;">HELLER</div> BENENNUNG/NAME/DENOMINAÇÃO Device tag list hydraulics	KUNDE/CUSTOMER/CLIENTE Paccar, Columbus USA	INV-NR/INV-NO/NO-INV	PLAN/PLAN/PLANO project Machine Document type Mounting position Page name	MP.05480700_F =M54807 &H hydraulic diagram 0	&2 0.a A3
---	--	--	--	--	-----------------------------------	---	---	---	--	----------------------	--	---	-----------------

Device tag list

Heller_Dynam_Bed_2L2C

device tag	number	denomination	Type	Manufacturer	Heller no.	device tag	number	denomination	Type	Manufacturer	Heller no.
+TM-32.12	1	hose line	DIN 20066-2SC10-NN-1050-P 462- 6-1050	Parker	01.100215	+H15-60.3	1	pilot operated check valve	Z2S 6 B1-6X/- R900347501	Bosch Rexroth	01.034271
+TM-32.13	1	hydraulic cylinder	CDT3MX3/25/12/350Z20B14HXETWW R901374280	Bosch Rexroth	01.108914	+H15-60.4	1	pressure reducing valve	ZDR 6 DP 2-4X/210 YM NG6, 210bar	Bosch Rexroth	01.086716
+H1-33.2	1	check valve	Z1S 6 P05-4X/V R901086051	Bosch Rexroth	01.081137	+H15-60.5	1	directional control valve	4WE 6 J 6X/-EG24N9K73L/SO407, 8W	Bosch Rexroth	01.098704
+H1-33.3	1	intermediate plate	HSZ 06 A085-3X/M00 R900514667	Bosch Rexroth	01.092767	+H15-60.6	1	hose line	S100-CR-CR-....	Hydrotechnik	
+H1-33.3-1	1	nozzle	D=2,5 - M8x1 DIN 906 00137445	Bosch Rexroth	01.093578	+H15-60.7	1	pressure switch	PN7071 0-250bar, G1/4	IFM Electronic	01.111727
+H1-33.3-2	1	nozzle	D=1,8 - M8x1 DIN 906 00150953	Bosch Rexroth	01.092770	+MT-60.11	1	hose line	DIN 20066-2SC10-NN-3940-P 462- 6-3940	Parker	01.100252
+H1-33.4	1	pressure reducing valve	ZDR 6 DP 2-4X/75 YM NG6, 75bar R900483786	Bosch Rexroth	01.081132	+H15-61.2	1	throttle check valve	Z2FS 6 2-4X/1QV R900481623	Bosch Rexroth	01.093456
	1	measuring connection	EMA3/1/4EDCF G1/4A - M16	Parker	01.084632	+H15-61.3	1	pilot operated check valve	Z2S 6 B1-6X/- R900347501	Bosch Rexroth	01.034271
+H1-33.5	1	directional control valve	4WE 6 J 6X/-EG24N9K73L/SO407, 8W	Bosch Rexroth	01.098704	+H15-61.4	1	pressure reducing valve	ZDR 6 DP 2-4X/210 YM NG6, 210bar	Bosch Rexroth	01.086716
+TM-33.11	1	hose line	DIN 20066-2SC10-NN-1500-P 462- 6-1500	Parker	01.100681	+H15-61.5	1	directional control valve	4WE 6 J 6X/-EG24N9K73L/SO407, 8W	Bosch Rexroth	01.098704
+TM-33.12	1	hose line	DIN 20066-2SC10-NN-1200-P 462- 6-1200	Parker	01.099727	+H15-61.6	1	hose line	S100-CR-CR-....	Hydrotechnik	
+TM-33.13	1	hydraulic cylinder	CHNB-25-289-DCM 2430 M D=25/12 H289	SMC	01.106047	+H15-61.7	1	pressure switch	PN7071 0-250bar, G1/4	IFM Electronic	01.111727
+H1-40.1	1	intermediate plate	HSZ 06 A325-3X/M01 R900521799	Bosch Rexroth	01.112676	+MT-61.11	1	hose line	DIN 20066-2SC10-NN-3940-P 462- 6-3940	Parker	01.100252
+H1-40.2	1	pressure reducing valve	ZDR 6 DP 2-4X/75 YM NG6, 75bar R900483786	Bosch Rexroth	01.081132	+H15-62.2	1	throttle check valve	Z2FS 6 2-4X/1QV R900481623	Bosch Rexroth	01.093456
+H1-40.3	1	check valve	Z1S 6 P05-4X/V R901086051	Bosch Rexroth	01.081137	+H15-62.3	1	pilot operated check valve	Z2S 6 B1-6X/- R900347501	Bosch Rexroth	01.034271
+H1-40.4	1	directional control valve	4WE 6 D 6X/-EG24N9K73L/SO407, 8W	Bosch Rexroth	01.098700	+H15-62.4	1	pressure reducing valve	ZDR 6 DP 2-4X/210 YM NG6, 210bar	Bosch Rexroth	01.086716
+H1-40.5	1	hose line	S100-CR-CR-....	Hydrotechnik		+H15-62.5	1	directional control valve	4WE 6 J 6X/-EG24N9K73L/SO407, 8W	Bosch Rexroth	01.098704
+H1-40.6	1	pressure switch	PN7092 0-100bar, G1/4	IFM Electronic	01.111726	+H15-62.6	1	hose line	S100-CR-CR-....	Hydrotechnik	
+H1-40.7	1	hose line	S100-CR-CR-....	Hydrotechnik		+H15-62.7	1	pressure switch	PN7071 0-250bar, G1/4	IFM Electronic	01.111727
+H1-40.8	1	pressure switch	PN7092 0-100bar, G1/4	IFM Electronic	01.111726	+MT-62.11	1	hose line	DIN 20066-2SC10-NN-3940-P 462- 6-3940	Parker	01.100252
+MT-40.11	1	hose line	DIN 20066-2SC10-NN-3940-P 462- 6-3940	Parker	01.100252	+H15-63.2	1	throttle check valve	Z2FS 6 2-4X/1QV R900481623	Bosch Rexroth	01.093456
+MT-41.1	1	Swivel axis		Heller Maschinenfabrik		+H15-63.3	1	pilot operated check valve	Z2S 6 B1-6X/- R900347501	Bosch Rexroth	01.034271
+H1-45.1	1	manifold	SA 066 DS1 10.500275	Heller Maschinenfabrik	13.500403	+H15-63.4	1	pressure reducing valve	ZDR 6 DP 2-4X/210 YM NG6, 210bar	Bosch Rexroth	01.086716
+H1-45.2	1	cover plate	110 115-11	Gutekunst	01.105658	+H15-63.5	1	directional control valve	4WE 6 J 6X/-EG24N9K73L/SO407, 8W	Bosch Rexroth	01.098704
+H1-45.3	1	cover plate	110 115-11	Gutekunst	01.105658	+H15-63.6	1	hose line	S100-CR-CR-....	Hydrotechnik	
+H1-45.4	1	cover plate	110 115-11	Gutekunst	01.105658	+H15-63.7	1	pressure switch	PN7071 0-250bar, G1/4	IFM Electronic	01.111727
+H15-60.1	1	manifold	SA 0610DS1 10.500433	Heller Maschinenfabrik	13.500775	+MT-63.11	1	hose line	DIN 20066-2SC10-NN-3940-P 462- 6-3940	Parker	01.100252
+H15-60.2	1	throttle check valve	Z2FS 6 2-4X/1QV R900481623	Bosch Rexroth	01.093456	+H15-64.2	1	throttle check valve	Z2FS 6 2-4X/1QV R900481623	Bosch Rexroth	01.093456

Änderungen nur im CAD-Original!
Changes in CAD only!
Mudanças no original CAD somente!

© Copyright reserved - Gebr. HELLER Maschinenfabrik GmbH, D-72822 Nürtingen
Schutzvermerk nach DIN 34 beachten!
Attention! Observe DIN 34
Atenção! Leia a DIN 34

ART DER ÄNDERUNG/REVISION/DESCRIÇÃO DE ALTERAÇÃO		Index	ZONE/ZONA	DATUM/DATE	NAME/NOME	PROJ./PROJ/ PROJ.	54807.00	HELLER	KUNDE/CUSTOMER/CLIENTE	PLAN/PLAN/PLANO	
CAD-System		URSPPR./ORIG.	GEPR./CHECK./REG.			M-NR/M-NO/ M-NO	M54807		Paccar, Columbus USA	project	MP.05480700_F
ePLAN 2.2.5		ERS./REP.	BEARB./CHG./ALT.	04.04.2017	AHFE/ZAJ	TYP/TYPE/ TIPO	H 10000 MC - A-Axis	BENENNUNG/NAME/DENOMINAÇÃO	INV-NR/INV-NO/NO-INV	Machine	=M54807
		ERS.D./REP.W.	GEZ./DRAWN/DES.	04.04.2017	AHFE/ZAJ	WERKSTÜCK/ PART/PEÇA			Device tag list hydraulics		Document type
										Mounting position	
										Page name	0.a

Device tag list


Heller_Dynam_Bed_2L2C

device tag	number	denomination	Type	Manufacturer	Heller no.
+H15-64.3	1	pilot operated check valve	Z2S 6 B1-6X/- R900347501	Bosch Rexroth	01.034271
+H15-64.4	1	pressure reducing valve	ZDR 6 DP 2-4X/210 YM NG6, 210bar	Bosch Rexroth	01.086716
+H15-64.5	1	directional control valve	4WE 6 J 6X/-EG24N9K73L/SO407, 8W	Bosch Rexroth	01.098704
+H15-64.6	1	hose line	S100-CR-CR-....	Hydrotechnik	
+H15-64.7	1	pressure switch	PN7071 0-250bar, G1/4	IFM Electronic	01.111727
+MT-64.11	1	hose line	DIN 20066-2SC10-NN-3940-P 462- 6-3940	Parker	01.100252
+H15-65.2	1	throttle check valve	Z2FS 6 2-4X/1QV R900481623	Bosch Rexroth	01.093456
+H15-65.3	1	pilot operated check valve	Z2S 6 B1-6X/- R900347501	Bosch Rexroth	01.034271
+H15-65.4	1	pressure reducing valve	ZDR 6 DP 2-4X/210 YM NG6, 210bar	Bosch Rexroth	01.086716
+H15-65.5	1	directional control valve	4WE 6 J 6X/-EG24N9K73L/SO407, 8W	Bosch Rexroth	01.098704
+H15-65.6	1	hose line	S100-CR-CR-....	Hydrotechnik	
+H15-65.7	1	pressure switch	PN7071 0-250bar, G1/4	IFM Electronic	01.111727
+MT-65.11	1	hose line	DIN 20066-2SC10-NN-3940-P 462- 6-3940	Parker	01.100252
+H15-66.2	1	throttle check valve	Z2FS 6 2-4X/1QV R900481623	Bosch Rexroth	01.093456
+H15-66.3	1	pilot operated check valve	Z2S 6 B1-6X/- R900347501	Bosch Rexroth	01.034271
+H15-66.4	1	pressure reducing valve	ZDR 6 DP 2-4X/210 YM NG6, 210bar	Bosch Rexroth	01.086716
+H15-66.5	1	directional control valve	4WE 6 J 6X/-EG24N9K73L/SO407, 8W	Bosch Rexroth	01.098704
+H15-66.6	1	hose line	S100-CR-CR-....	Hydrotechnik	
+H15-66.7	1	pressure switch	PN7071 0-250bar, G1/4	IFM Electronic	01.111727
+MT-66.11	1	hose line	DIN 20066-2SC10-NN-3940-P 462- 6-3940	Parker	01.100252
+H15-67.2	1	throttle check valve	Z2FS 6 2-4X/1QV R900481623	Bosch Rexroth	01.093456
+H15-67.3	1	pilot operated check valve	Z2S 6 B1-6X/- R900347501	Bosch Rexroth	01.034271
+H15-67.4	1	pressure reducing valve	ZDR 6 DP 2-4X/210 YM NG6, 210bar	Bosch Rexroth	01.086716
+H15-67.5	1	directional control valve	4WE 6 J 6X/-EG24N9K73L/SO407, 8W	Bosch Rexroth	01.098704
+H15-67.6	1	hose line	S100-CR-CR-....	Hydrotechnik	
+H15-67.7	1	pressure switch	PN7071 0-250bar, G1/4	IFM Electronic	01.111727
+MT-67.11	1	hose line	DIN 20066-2SC10-NN-3940-P 462- 6-3940	Parker	01.100252
+H15-81.2	1	intermediate plate	HSZ 06 A027-3X/M01 R900515513	Bosch Rexroth	01.105657

device tag	number	denomination	Type	Manufacturer	Heller no.
+H15-81.3	1	throttle check valve	Z2FS 6 2-4X/1QV R900481623	Bosch Rexroth	01.093456
+H15-81.4	1	pressure reducing valve	ZDR 6 DP 2-4X/75 YM NG6, 75bar R900483786	Bosch Rexroth	01.081132
+H15-81.5	1	directional control valve	4WE 6 J 6X/-EG24N9K73L/SO407, 8W	Bosch Rexroth	01.098704
+H15-81.6	1	measuring connection	GMA3/18LOMDCF	Parker	01.084636
+H15-81.7	1	measuring connection	GMA3/18LOMDCF	Parker	01.084636
+H15-81.8	1	cover plate	110 115-11	Gutekunst	01.105658
+GOS-81.17	1	hydraulic cylinder	CDT3MS2/32/22/950Z20S11HHEMWWZ22838	Bosch Rexroth	01.108896
+GOS-81.18	1	hydraulic cylinder	CDT3MS2/32/22/950Z20S11HHEMWWZ22838	Bosch Rexroth	01.108896
+MT-103.12	1	plastic pipe	PUN-10x1,5-BL 159668	Festo	01.092359
+MU-107.10	1	plastic pipe	PA 10x1 1 820 712 105	AVENTICS	01.093306
+MU-111.10	1	plastic pipe	PA 12x1,5 1 820 712 103	AVENTICS	01.093304
+MU-121.10	1	plastic pipe	PA 6x1 1 820 712 101	AVENTICS	01.093302
+MT-160.21	1	plastic pipe	PUN-10x1,5-BL 159668	Festo	01.092359
+MT-160.22	1	plastic pipe	PUN-10x1,5-BL 159668	Festo	01.092359
+MT-160.23	1	plastic pipe	PUN-10x1,5-BL 159668	Festo	01.092359
+MT-160.24	1	plastic pipe	PUN-10x1,5-BL 159668	Festo	01.092359
+MU-210.20	1	oil/water heat exchanger	TPL00-K-10-12 G1	Funke	01.100384
+MU-410.7	1	hose	Oilpress N/L 20 25x36 20bar IH30832006/40	Parker	01.100022
+MT-492-41.1					

Änderungen nur im CAD-Original!
Changes in CAD only!
Mudanças no original CAD somente!

© Copyright reserved - Gebr. HELLER Maschinenfabrik GmbH, D-72822 Nürtingen
Schutzvermerk nach DIN 34 beachten!
Attention! Observe DIN 34
Atenção! Atenção DIN 34

← 0.a		+H1/1 →									
ART DER ÄNDERUNG/REVISION/DESCRIÇÃO DE ALTERAÇÃO		Index	ZONE/ZONA	DATUM/DATE	NAME/NOME	PROJ./PROJ/ PROJ.	54807.00		KUNDE/CUSTOMER/CLIENTE	PLAN/PLAN/PLANO	
CAD-System		URS/PR./ORIG.	GEPR./CHECK./REG.			M-NR/M-NO/ M-NO	M54807		Paccar, Columbus USA	project	MP.05480700_F
ePLAN 2.2.5		ERS./REP.	BEARB./CHG./ALT.	04.04.2017	AHFE/ZAJ	TYP./TYPE/ TIPO	H 10000 MC - A-Axis	BENENNUNG/NAME/DENOMINAÇÃO Device tag list hydraulics	INV-NR/INV-NO/NO-INV	Machine	=M54807
		ERS.D./REP.W.	GEZ./DRAWN/DES.	04.04.2017	AHFE/ZAJ	WERKSTÜCK/ PART/PEÇA				Document type	&H hydraulic diagram
									Mounting position		
									Page name	0.b	
										A3	

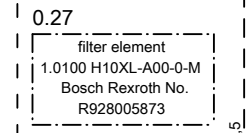
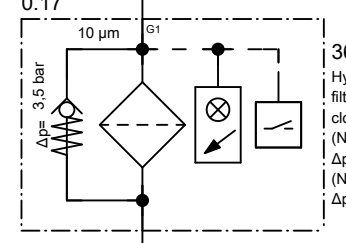
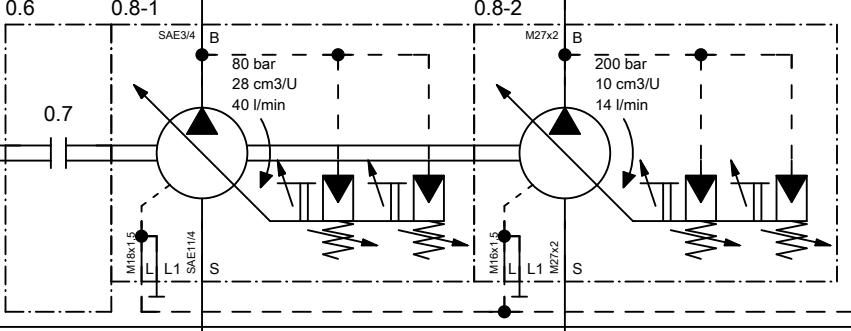
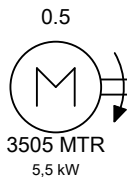
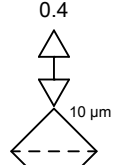
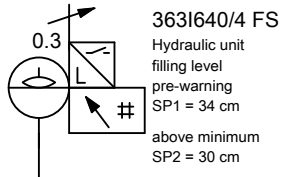
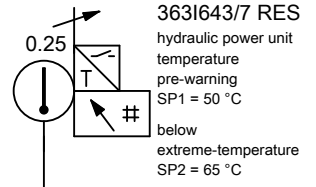
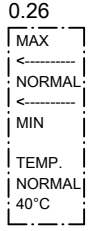
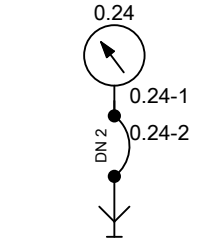
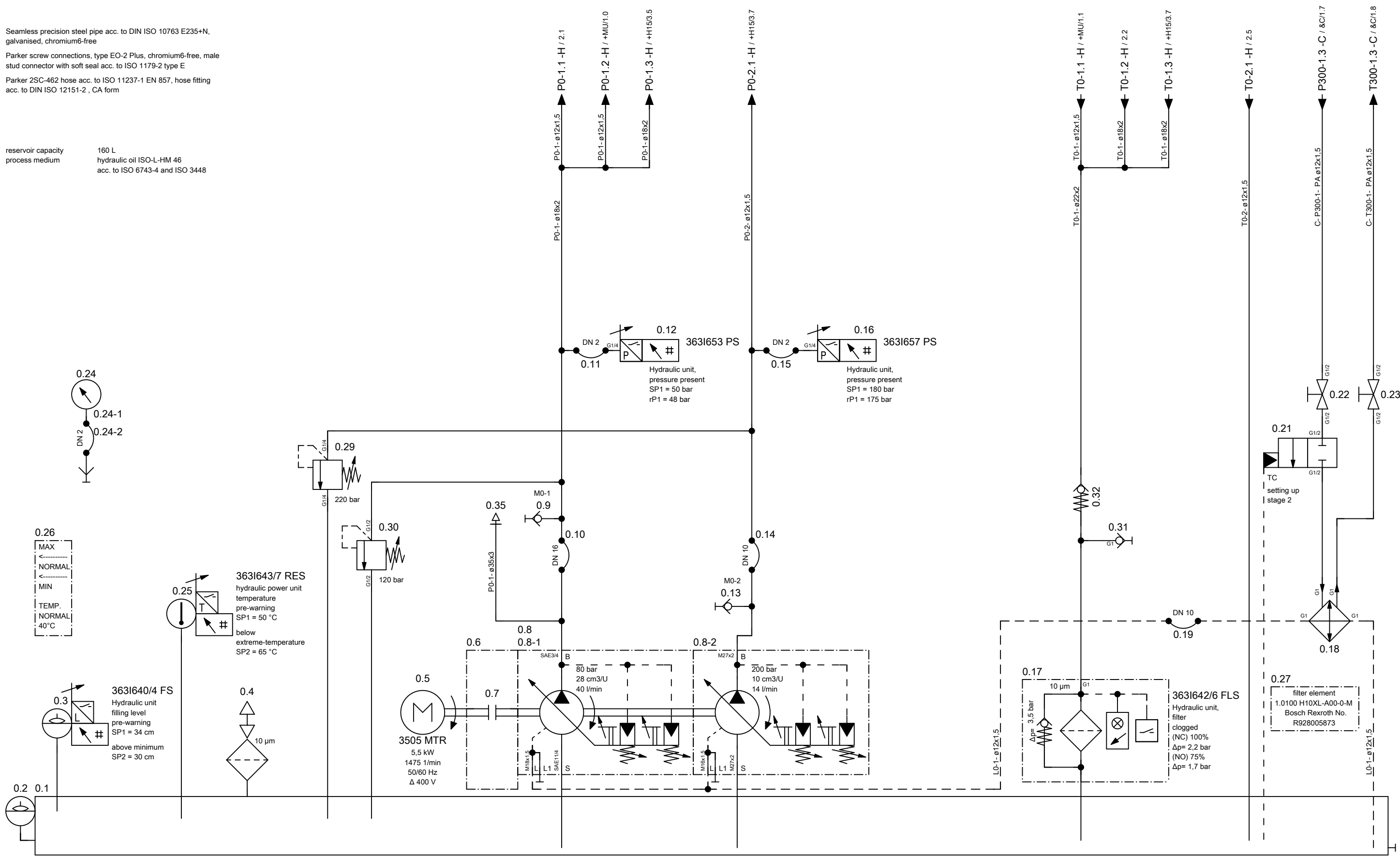
Änderungen nur im CAD-Original!
Changes in CAD only!
Mudanças no original CAD somente!

© Copyright reserved - Gebr. HELLER Maschinenfabrik GmbH, D-72822 Nürtingen
Schutzvermerk nach DIN 34 beachten!
Attention! Observe DIN 34
Atenção! Atenção DIN 34

Seamless precision steel pipe acc. to DIN ISO 10763 E235+N, galvanized, chromium6-free
Parker screw connections, type EO-2 Plus, chromium6-free, male stud connector with soft seal acc. to ISO 1179-2 type E
Parker 2SC-462 hose acc. to ISO 11237-1 EN 857, hose fitting acc. to DIN ISO 12151-2, CA form

reservoir capacity 160 L
process medium hydraulic oil ISO-L-HM 46 acc. to ISO 6743-4 and ISO 3448

0 hydraulic power unit



← +/0.b

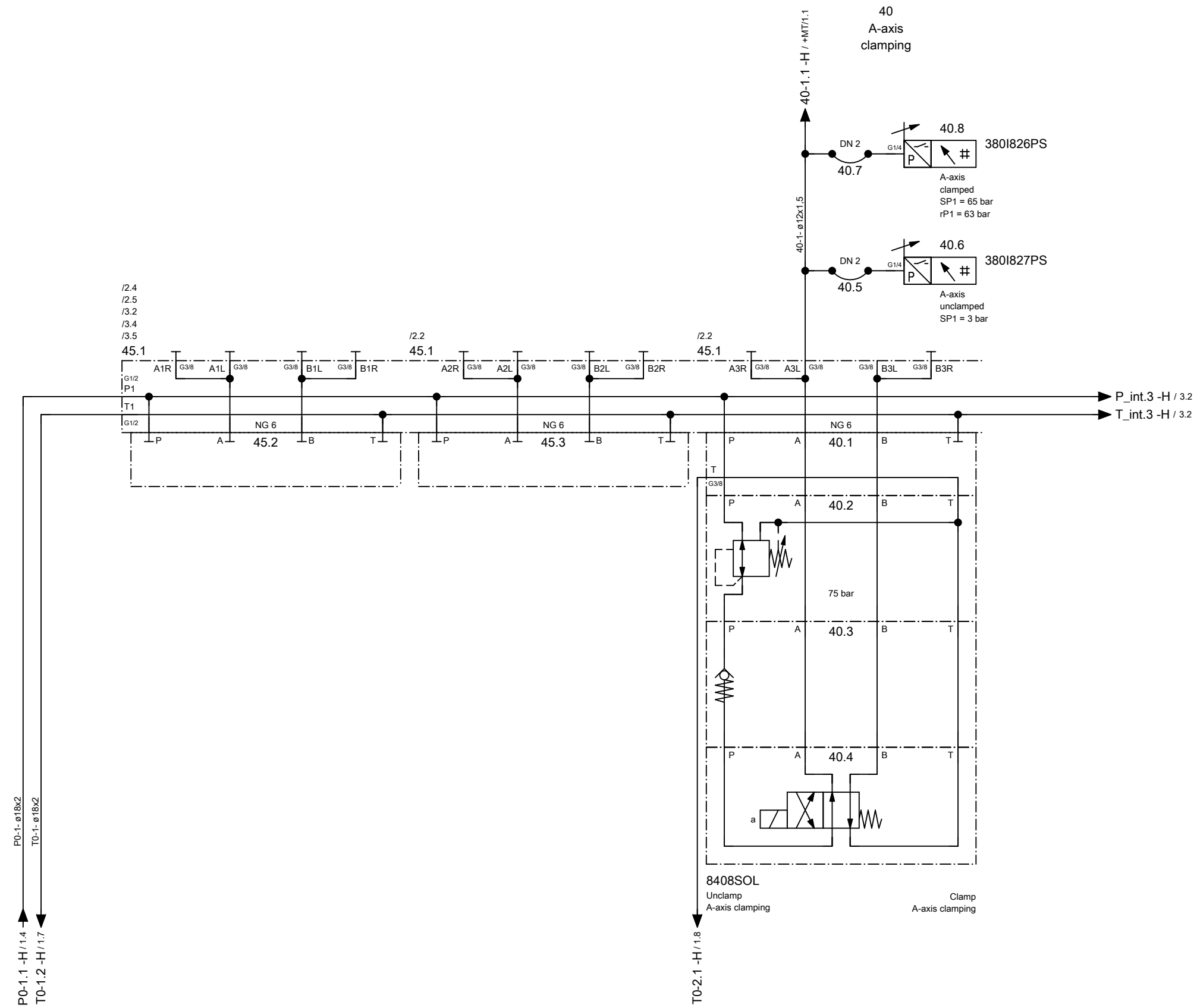
2 →

ART DER AENDERUNG/REVISION/DESCRIÇÃO DE ALTERAÇÃO				Index	ZONE/ZONA	DATUM/DATE	NAME/NOME	PROJ./PROJ./PROJ.	54807.00	<h1 style="text-align: center;">HELLER</h1> <p style="text-align: center;">hydraulic diagram</p>	KUNDE/CUSTOMER/CLIENTE	Paccar, Columbus USA	PLAN/PLAN/PLANO	project	MP.05480700_F
CAD-System				URSPPR./ORIG.	GEPR./CHECK./REG.			M-NR/M-NO/ M-NO	M54807		INV-NR/INV-NO/NO-INV	13.503932, 13.503916, 13.503921, 13.503925	Machine	=M54807	
ePLAN 2.2.5				ERS./REP.	BEARB./CHG./ALT.	04.04.2017	AHFE/ZAJ	TYP/TYPE/ TIPO	H 10000 MC - A-Axis		WERKSTÜCK/ PART/PEÇA		Document type	&H hydraulic diagram	
				ERS.D./REP.W.	GEZ./DRAWN/DES.	15.03.2016	AHFE/HOP					Mounting position	+H1 HELP1	Page name	1

Heller_2L

Änderungen nur im CAD-Original!
Changes in CAD only!
Mudanças no original CAD somente!

© Copyright reserved - Gebr. HELLER Maschinenfabrik GmbH, D-72622 Nürtingen
Schutzvermerk nach DIN 34 beachten!
Attention! Observe DIN 34
Atenção! Atenção DIN 34

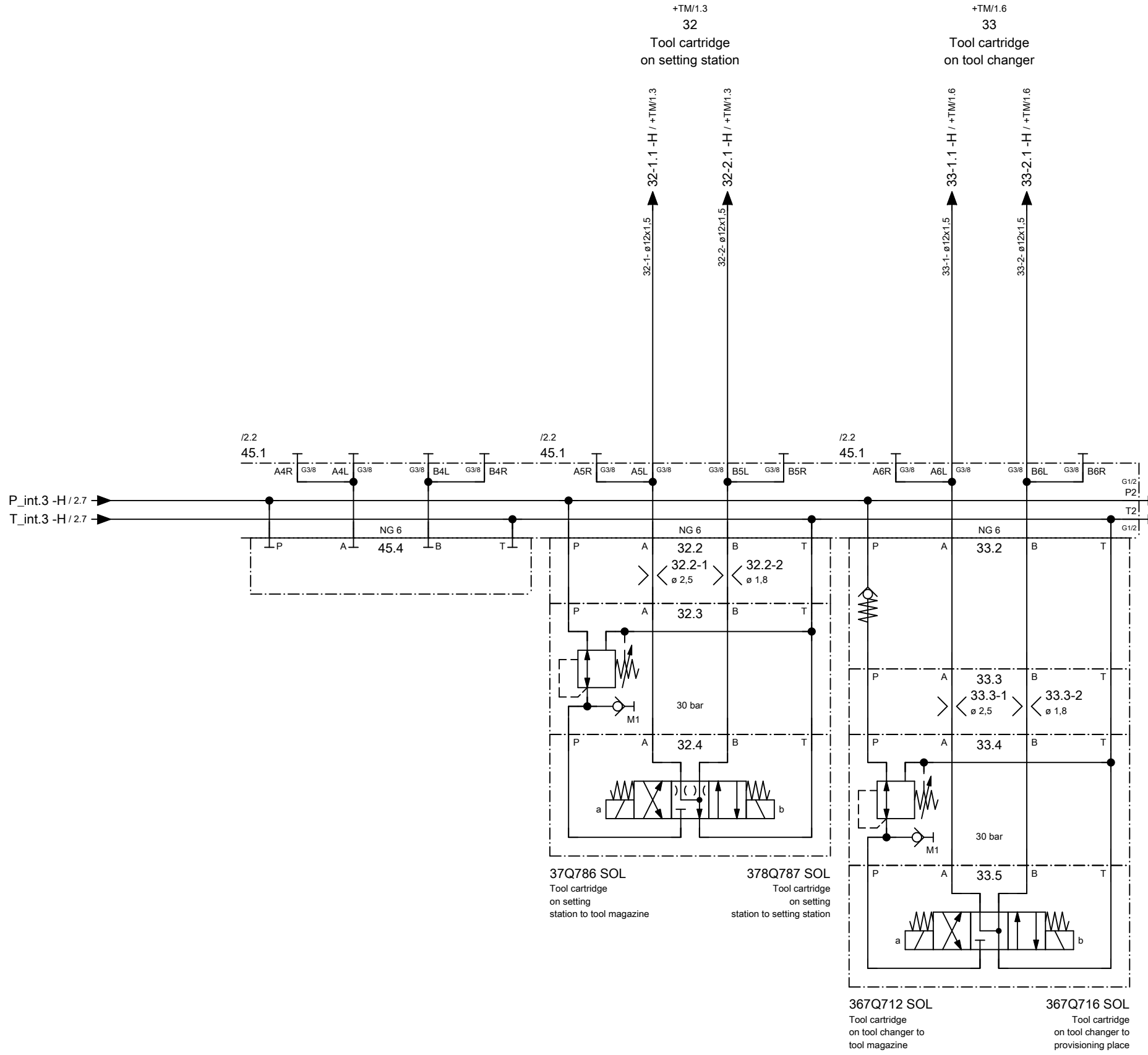


ART DER AENDERUNG/REVISION/DESCRIÇÃO DE ALTERAÇÃO				Index	ZONE/ZONA	DATUM/DATE	NAME/NOME	PROJ./PROJ./PROJ.	54807.00	HELLER	KUNDE/CUSTOMER/CLIENTE	PLAN/PLAN/PLANO	
CAD-System				URSPR./ORIG.	GEPR./CHECK./REG.			M-NR/M-NO/ M-NO	M54807		Paccar, Columbus USA	project	MP.05480700_F
ePLAN 2.2.5				ERS./REP.	BEARB./CHG./ALT.	04.04.2017	AHFE/ZAJ	TYP/TYPE/ TIPO	H 10000 MC - A-Axis	hydraulic diagram	INV-NR/INV-NO/NO-INV	Machine	=M54807
				ERS.D./REP.W.	GEZ./DRAWN/DES.	15.03.2016	AHFE/ZAJ	WERKSTÜCK/ PART/PEÇA			14.502405	Document type	&H hydraulic diagram
												Mounting position	+H1 HELP1
												Page name	2

Heller_2L

Änderungen nur im CAD-Original!
Changes in CAD only!
Mudanças no original CAD somente!

© Copyright reserved - Gebr. HELLER Maschinenfabrik GmbH, D-72622 Nürtingen
Schutzvermerk nach DIN 34 beachten!
Attention! Observe DIN 34
Atenção! Atenção DIN 34



← 2

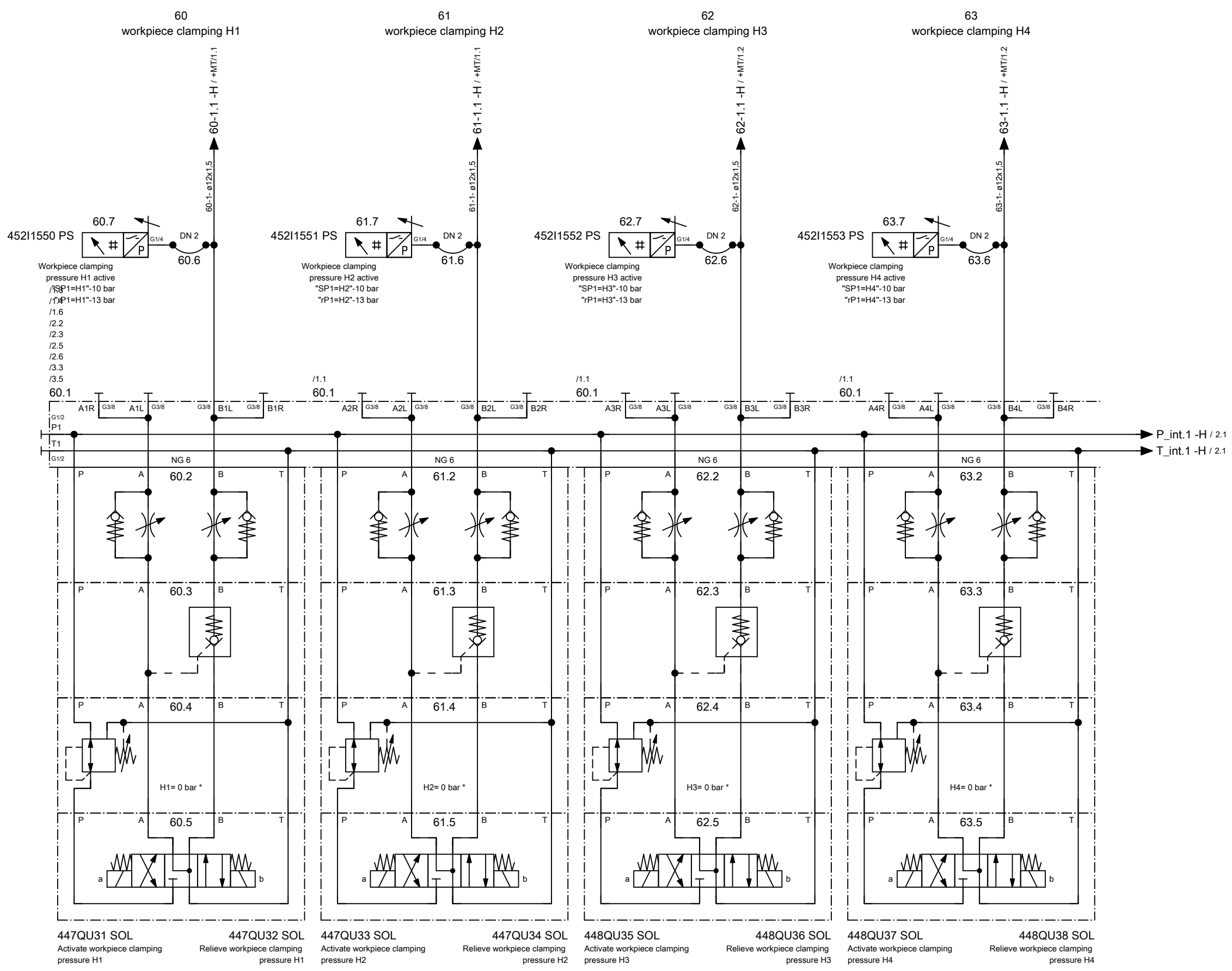
→ +H15/1

ART DER AENDERUNG/REVISION/DESCRIÇÃO DE ALTERAÇÃO		Index	ZONE/ZONA	DATUM/DATE	NAME/NOME	PROJ./PROJ./PROJ.	54807.00	HELLER	KUNDE/CUSTOMER/CLIENTE	PLAN/PLAN/PLANO	
CAD-System		URSPPR./ORIG.	GEPR./CHECK./REG.	BEARB./CHG./ALT.	AHFE/ZAJ	M-NR./M-NO/ M-NO	M54807		Paccar, Columbus USA	project	MP.05480700_F
ePLAN 2.2.5		ERS./REP.	GEZ./DRAWN/DES.	15.03.2016	AHFE/ZAJ	TYP./TYPE/ TIPO	H 10000 MC - A-Axis	hydraulic diagram	INV-NR./INV-NO/NO-INV	Machine	=M54807
		ERS.D./REP.W.				WERKSTÜCK/ PART/PEÇA			14.502405	Document type	&H
									Mounting position	+H1	HELP1
									Page name	3	

Heller_2L

Änderungen nur im CAD-Original!
Changes in CAD only!
Mudanças no original CAD somente!

© Copyright reserved - Gebr. HELLER Maschinenfabrik GmbH, D-72822 Nürtingen
Schutzvermerk nach DIN 34 beachten!
Attention! Observe DIN 34
Atenção! Atenção DIN 34



* for pressure setting see the hydraulic diagram of the clamping fixture

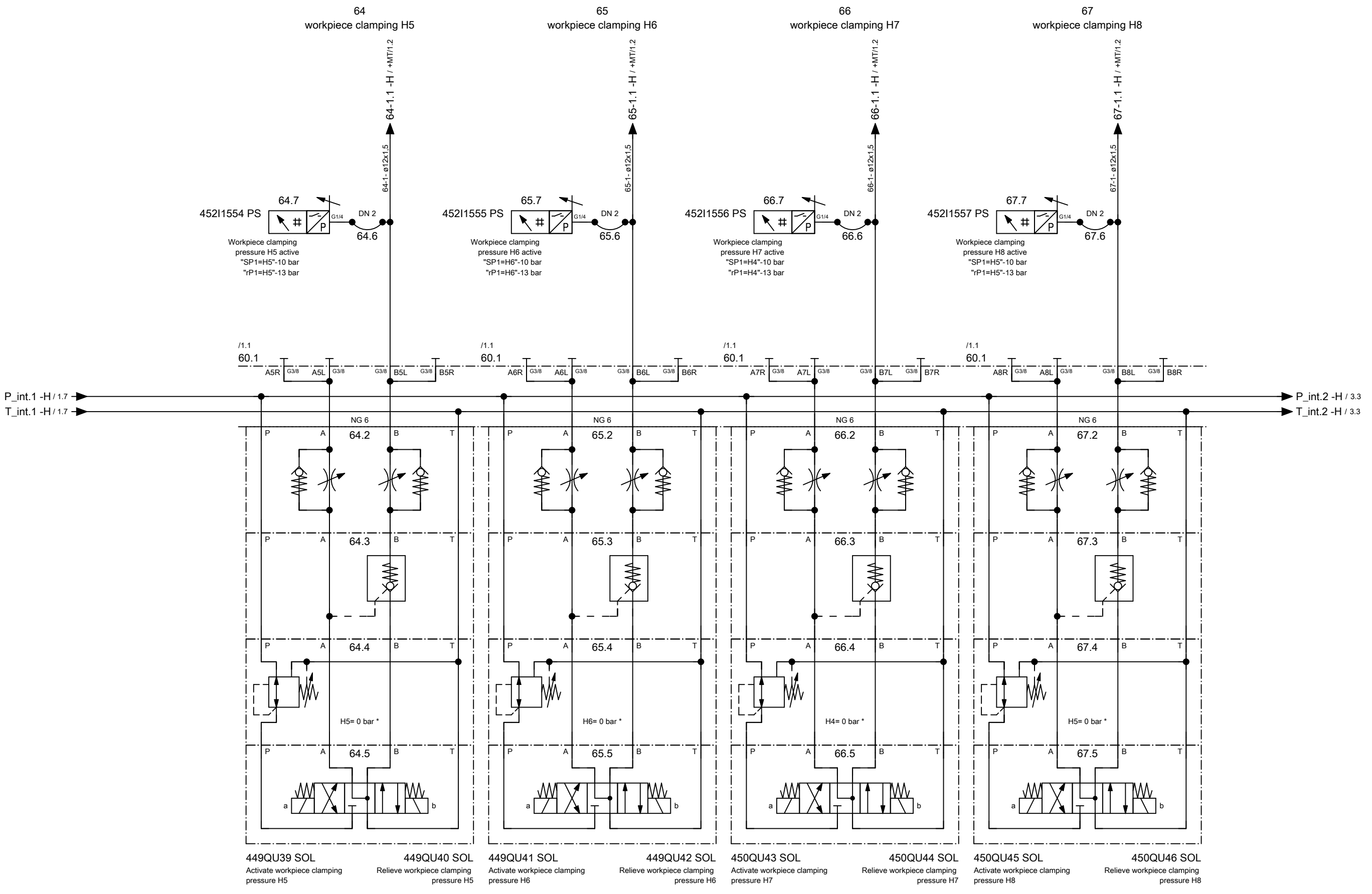
← +H1/3

→ 2

ART DER ÄNDERUNG/REVISION/DESCRIÇÃO DE ALTERAÇÃO		Index	ZONE/ZONA	DATUM/DATE	NAME/NOME	PROJ./PROJ./PROJ.	HELLER	KUNDE/CUSTOMER/CLIENTE	PLAN/PLAN/PLANO
CAD-System		URSPR./ORIG.	GEPR./CHECK./REG.			454807.00		Paccar, Columbus USA	project
ePLAN 2.2.5		ERS./REP.	BEARB./CHG./ALT.	13.07.2016	AHFE/ZAJ	M54807	hydraulic diagram	INV-NR./INV-NO/NO-INV	Machine
		ERS.D./REP.W.	GEZ./DRAWN/DES.	15.03.2016	AHFE/HOP	H 10000 MC - A-Axis		14.502391	Document type
						WERKSTÜCK/ PART/PEÇA		Mounting position	&H hydraulic diagram
								Page name	+H15 HELP1/5
									1

Änderungen nur im CAD-Original!
Changes in CAD only!
Mudanças no original CAD somente!

© Copyright reserved - Gebr. HELLER Maschinenfabrik GmbH, D-72822 Nürtingen
Schutzvermerk nach DIN 34 beachten!
Attention! Observe DIN 34
Atenção! Atenção DIN 34

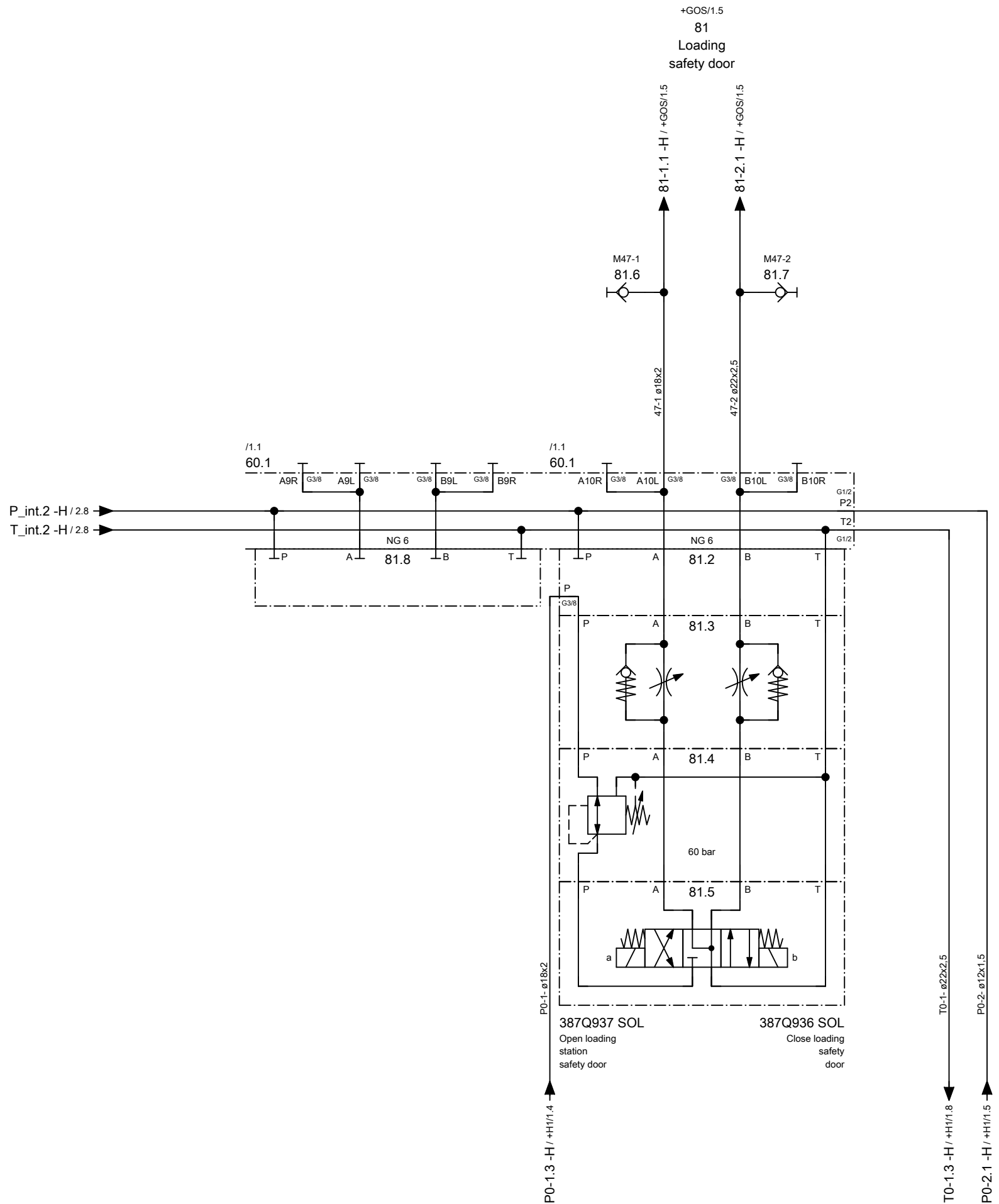


* for pressure setting see the hydraulic diagram of the clamping fixture

ART DER AENDERUNG/REVISION/DESCRIÇÃO DE ALTERAÇÃO				PROJ./PROJ./PROJ.	54807.00	HELLER	KUNDE/CUSTOMER/CLIENTE	PLAN/PLAN/PLANO	
CAD-System				M-NR/M-NO/ M-NO	M54807		Paccar, Columbus USA	project	MP.05480700_F
ePLAN 2.2.5				TYP/TYPER/ TIPO	H 10000 MC - A-Axis	hydraulic diagram	INV-NR/INV-NO/NO-INV	Machine	=M54807
URSPR./ORIG.				WERKSTÜCK/ PART/PEÇA			14.502391	Document type	&H hydraulic diagram
ERS./REP.								Mounting position	+H15 HELP1/5
ERS.D./REP.W.							Page name	2	

Änderungen nur im CAD-Original!
Changes in CAD only!
Mudanças no original CAD somente!

© Copyright reserved - Gebr. HELLER Maschinenfabrik GmbH, D-72622 Nürtingen
Schutzvermerk nach DIN 34 beachten!
Attention! Observe DIN 34
Atenção! Atenção DIN 34



← 2

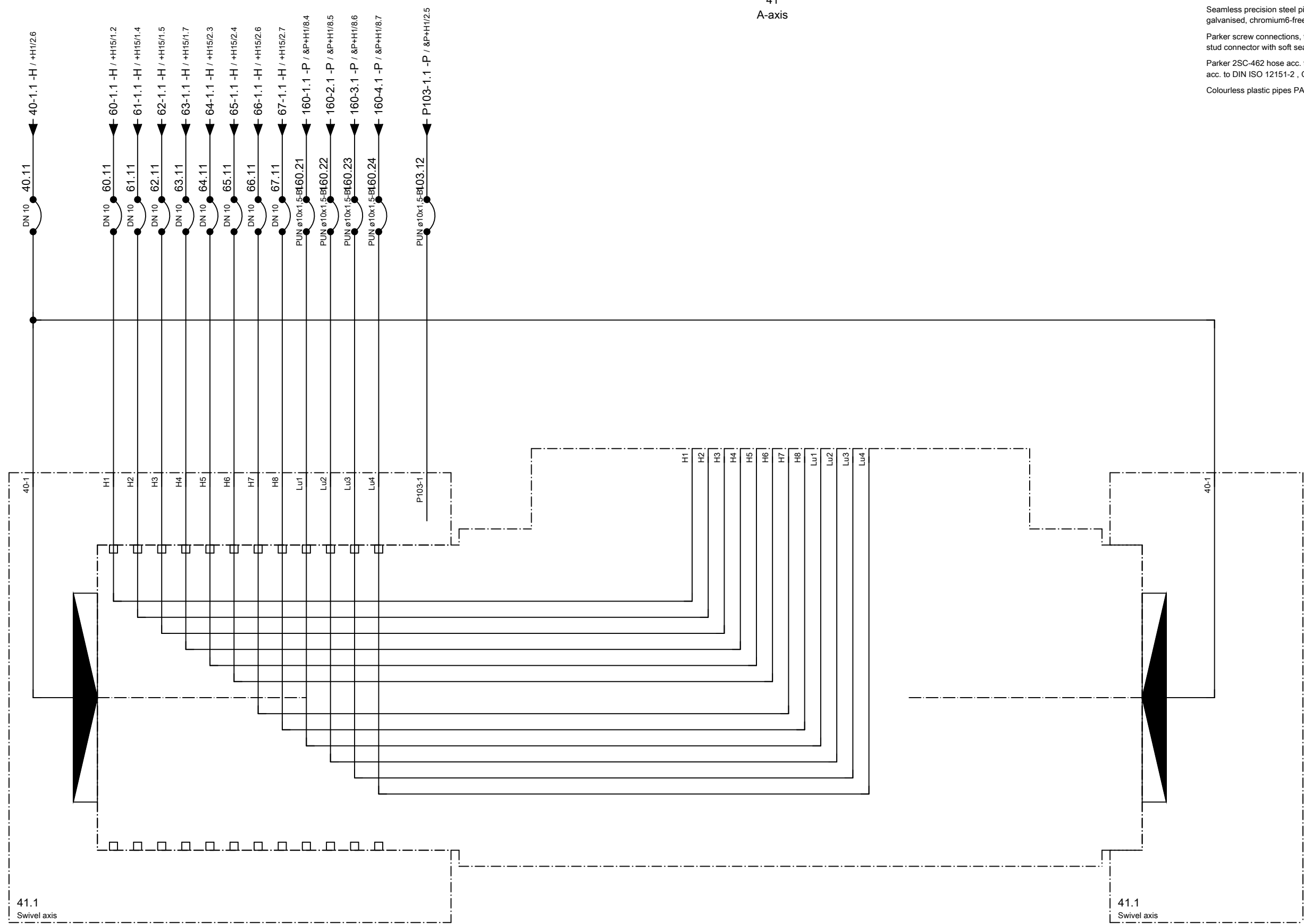
+MT/1 →

				PROJ./PROJ./PROJ.	54807.00	HELLER		KUNDE/CUSTOMER/CLIENTE		PLAN/PLAN/PLANO	
				M-NR./M-NO/ M-NO	M54807			Paccar, Columbus USA		project	
ART DER AENDERUNG/REVISION/DESCRIÇÃO DE ALTERAÇÃO				Index	ZONE/ZONA	DATUM/DATE	NAME/NOME	INV-NR./INV-NO/NO-INV		Document type	
CAD-System				URSPR./ORIG.	GEPR./CHECK./REG.			14.502391, 13.502960, 13.503879		&H hydraulic diagram	
ePLAN 2.2.5				ERS./REP.	BEARB./CHG./ALT.	13.07.2016	AHFE/ZAJ			Mounting position	
				ERS.D./REP.W.	GEZ./DRAWN/DES.	15.03.2016	AHFE/HOP			+H15 HELP1/5	
										Page name	
										3	
										A3	

Heller_2L

Änderungen nur im CAD-Original!
Changes in CAD only!
Mudanças no original CAD somente!

© Copyright reserved - Gebr. HELLER Maschinenfabrik GmbH, D-72822 Nürtingen
Schutzvermerk nach DIN 34 beachten!
Attention! Observe DIN 34
Atenção! Atente DIN 34



41
A-axis

Seamless precision steel pipe acc. to DIN ISO 10763 E235+N, galvanised, chromium6-free
Parker screw connections, type EO-2 Plus, chromium6-free, male stud connector with soft seal acc. to ISO 1179-2 type E
Parker 2SC-462 hose acc. to ISO 11237-1 EN 857, hose fitting acc. to DIN ISO 12151-2, CA form
Colourless plastic pipes PA, AVENTICS, push-in fittings, Steckfix

41.1
Swivel axis

41.1
Swivel axis

← +H15/3

+MU/1 →

ART DER AENDERUNG/REVISION/DESCRIÇÃO DE ALTERAÇÃO		Index	ZONE/ZONA	DATUM/DATE	NAME/NOME	PROJ./PROJ/ PROJ.	54807.00	HELLER	KUNDE/CUSTOMER/CLIENTE	PLAN/PLAN/PLANO	
CAD-System		URSPPR./ORIG.	GEPR./CHECK./REG.			M-NR/M-NO/ M-NO	M54807		Paccar, Columbus USA	project	MP.05480700_F
ePLAN 2.2.5		ERS./REP.	BEARB./CHG./ALT.	04.04.2017	AHFE/ZAJ	TYP/TYPE/ TIPO	H 10000 MC - A-Axis	hydraulic diagram	INV-NR/INV-NO/NO-INV	Machine	=M54807
		ERS.D./REP.W.	GEZ./DRAWN/DES.	15.03.2016	AHFE/HOP	WERKSTÜCK/ PART/PEÇA				Document type	&H
									Mounting position	+MT	table
									Page name	1	

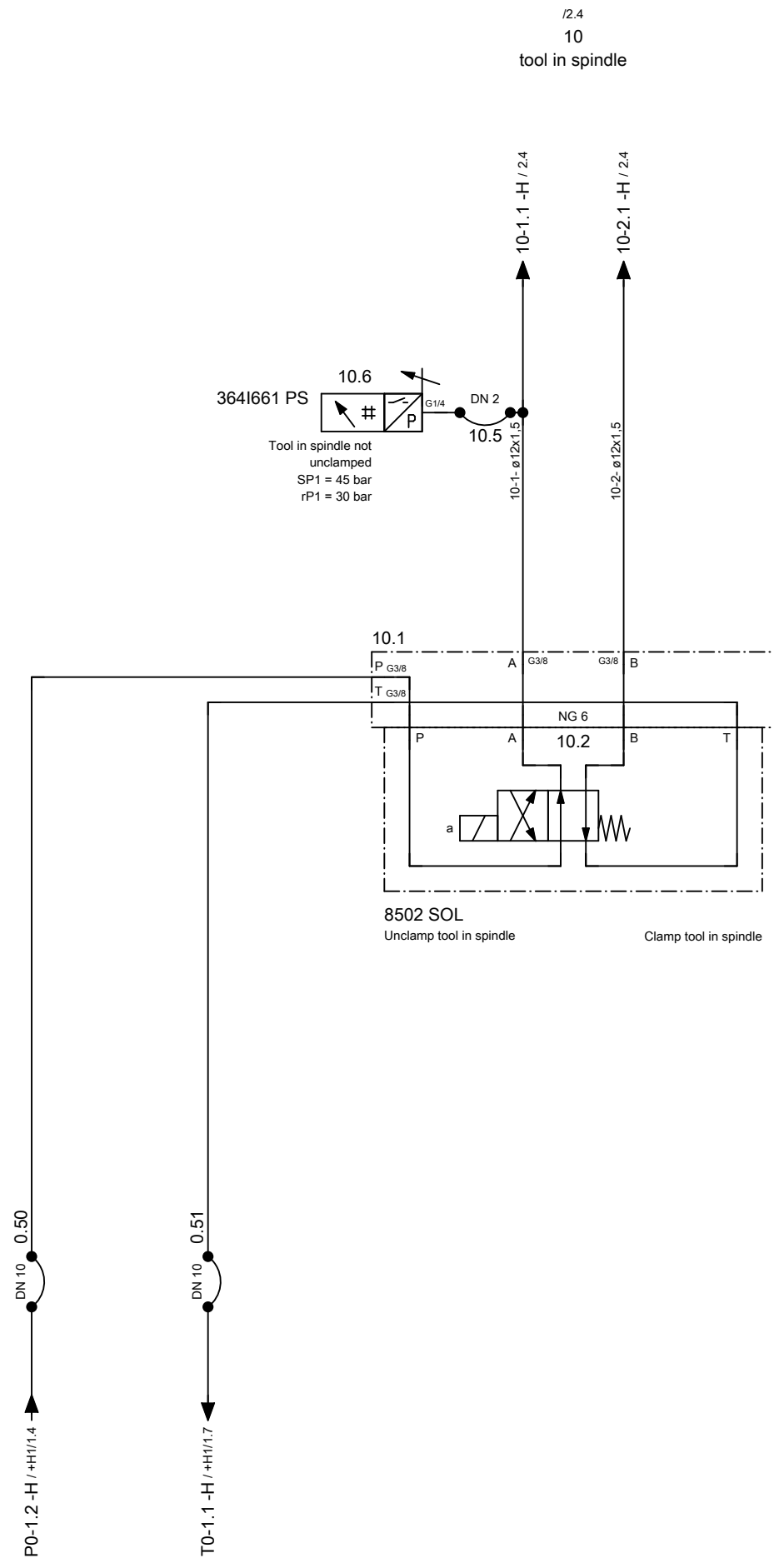
Heller_2L

A3

19 / 62

Änderungen nur im CAD-Original!
Changes in CAD only!
Mudanças no original CAD somente!

© Copyright reserved - Gebr. HELLER Maschinenfabrik GmbH, D-72822 Nürtingen
Schutzvermerk nach DIN 34 beachten!
Attention! Observe DIN 34
Atenção! Atenção DIN 34



← +MT/1

2 →

ART DER AENDERUNG/REVISION/DESCRIÇÃO DE ALTERAÇÃO		Index	ZONE/ZONA	DATUM/DATE	NAME/NOME
CAD-System	URSPR./ORIG.	GEPR./CHECK./REG.			
ePLAN 2.2.5	ERS./REP.	BEARB./CHG./ALT.	04.04.2017	AHFE/ZAJ	
	ERS.D./REP.W.	GEZ./DRAWN/DES.	15.03.2016	AHFE/HOP	

PROJ./PROJ/PROJ.	54807.00
M-NR/M-NO/M-NO	M54807
TYP/TYPE/TIPO	H 10000 MC - A-Axis
WERKSTÜCK/PART/PEÇA	

HELLER	
hydraulic diagram	

KUNDE/CUSTOMER/CLIENTE	Paccar, Columbus USA
INV-NR/INV-NO/NO-INV	14.502392

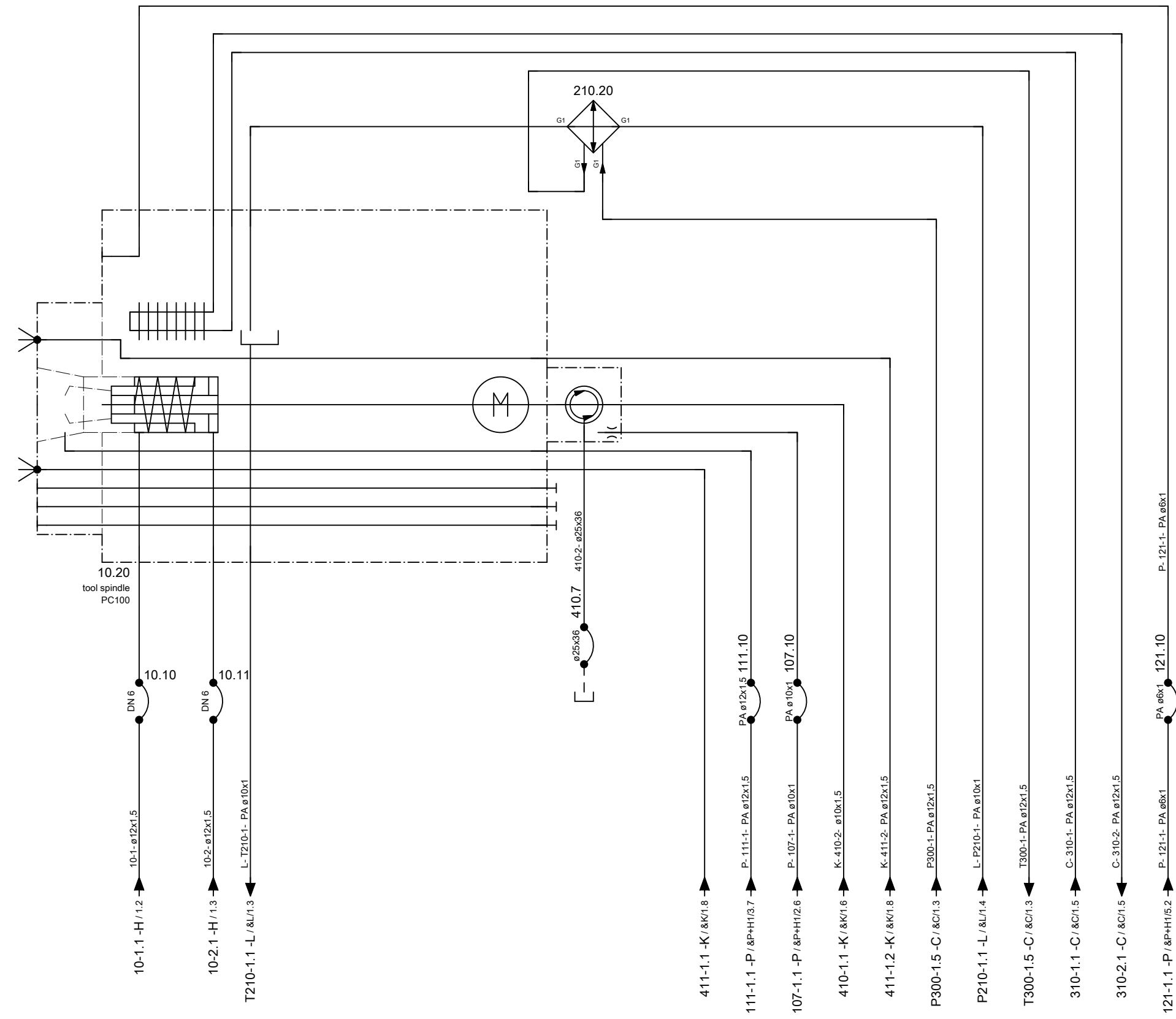
PLAN/PLAN/PLANO	project	MP.05480700_F
	Machine	=M54807
	Document type	&H hydraulic diagram
	Mounting position	+MU unit
	Page name	1

Änderungen nur im CAD-Original!
Changes in CAD only!
Mudanças no original CAD somente!

© Copyright reserved - Gebr. HELLER Maschinenfabrik GmbH, D-72622 Nürtingen
Schutzvermerk nach DIN 34 beachten!
Attention! Observe DIN 34
Atenção! Atenção DIN 34

/1.2
10
tool in spindle

&L/1.4
210
gear lubrication



reservoir capacity 5 L
process medium lubrication oil ISO-L-CKC 46
acc. to ISO 6743-6 and ISO 3448

← 1

+GOS/1 →

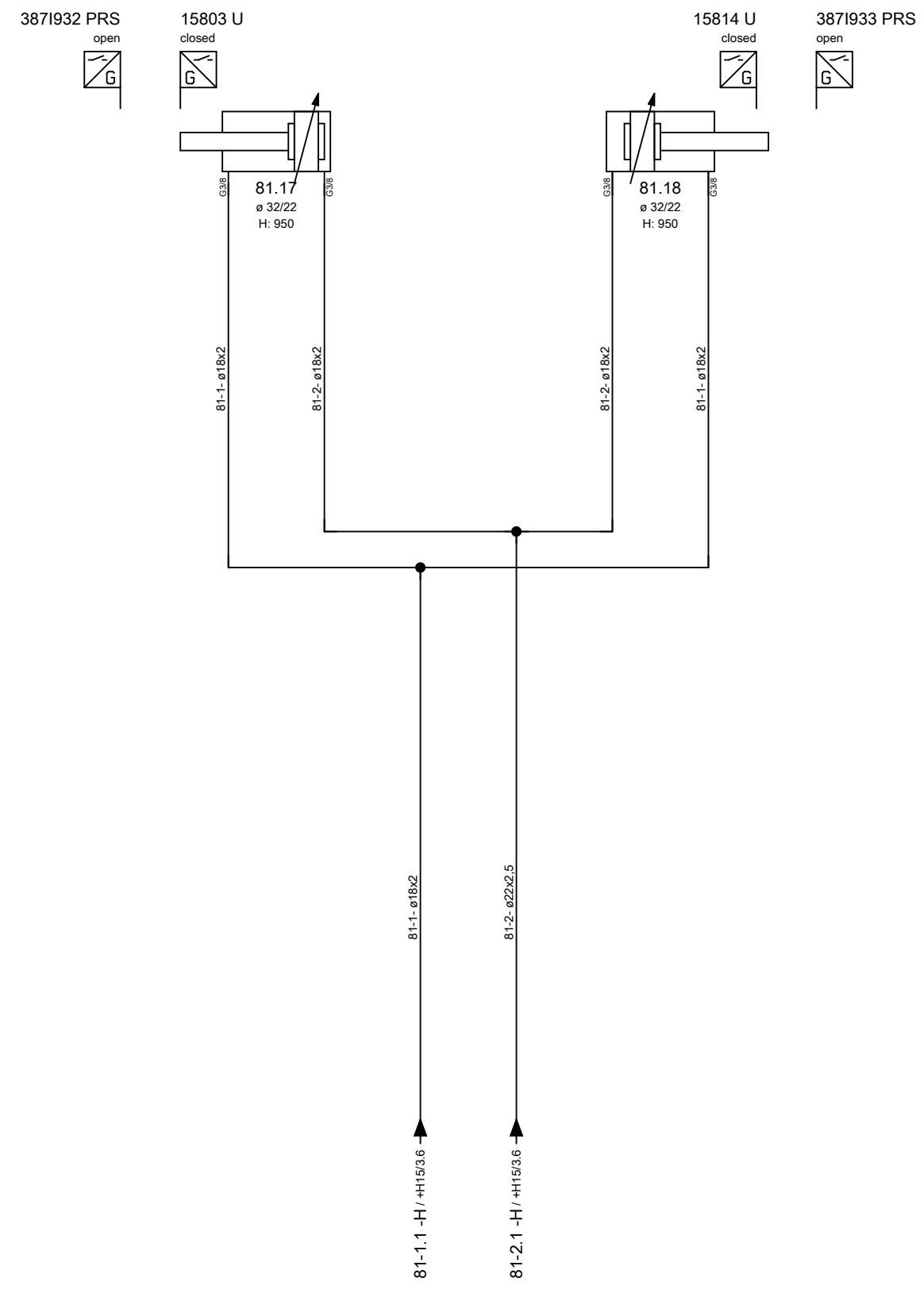
ART DER AENDERUNG/REVISION/DESCRIÇÃO DE ALTERAÇÃO				Index	ZONE/ZONA	DATUM/DATE	NAME/NOME	PROJ./PROJ./PROJ.	54807.00	HELLER	KUNDE/CUSTOMER/CLIENTE	PLAN/PLAN/PLANO	
CAD-System				URSPR./ORIG.	GEPR./CHECK./REG.			M-NR/M-NO/ M-NO	M54807		Paccar, Columbus USA	project	MP.05480700_F
ePLAN 2.2.5				ERS./REP.	BEARB./CHG./ALT.	19.10.2016	AHFE/HJ001	TYP/TYPE/ TIPO	H 10000 MC - A-Axis	hydraulic diagram	INV-NR/INV-NO/NO-INV	Machine	=M54807
				ERS.D./REP.W.	GEZ./DRAWN/DES.	15.03.2016	AHFE/HOP	WERKSTÜCK/ PART/PEÇA			Document type	&H	hydraulic diagram
											Mounting position	+MU	unit
											Page name	2	
												A3	

Heller_2L

Änderungen nur im CAD-Original!
Changes in CAD only!
Mudanças no original CAD somente!

© Copyright reserved - Gebr. HELLER Maschinenfabrik GmbH, D-72622 Nürtingen
Schutzvermerk nach DIN 34 beachten!
Attention! Observe DIN 34
Atenção! Atente DIN 34

+H15/3.6
81
loading hatch



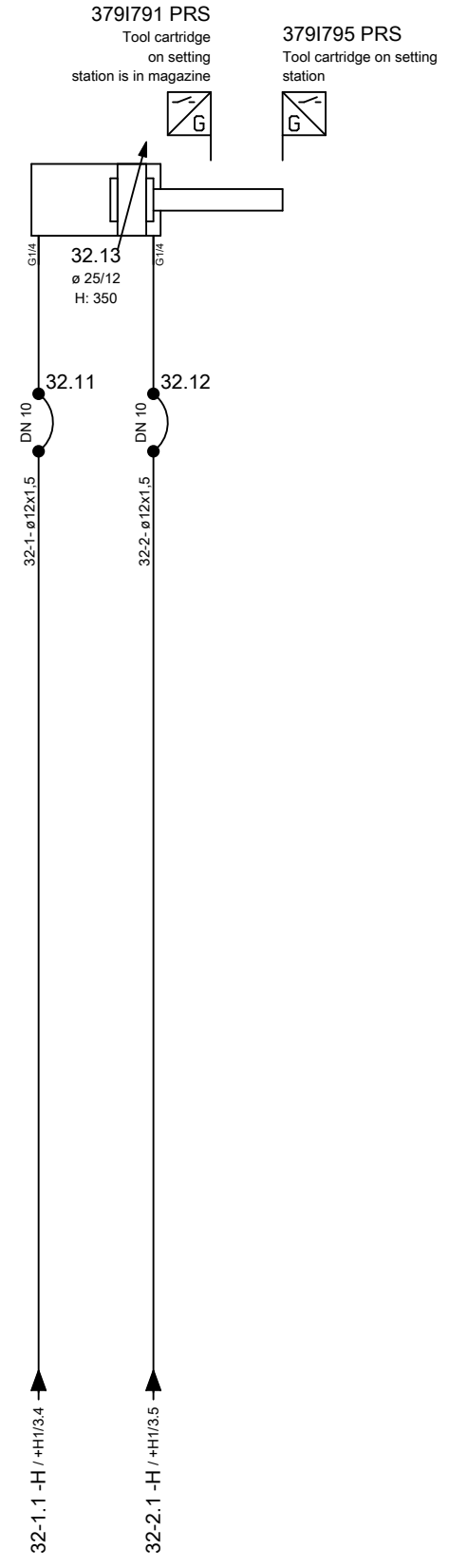
← +MU/2 +TM/1 →

				PROJ./PROJ./PROJ.	54807.00	HELLER	KUNDE/CUSTOMER/CLIENTE	PLAN/PLAN/PLANO			
				M-NR./M-NO/ M-NO	M54807		Paccar, Columbus USA	project	MP.05480700_F		
ART DER AENDERUNG/REVISION/DESCRIÇÃO DE ALTERAÇÃO				Index	ZONE/ZONA	DATUM/DATE	NAME/NOME	Machine	=M54807		
CAD-System	URSPR./ORIG.			GEPR./CHECK./REG.			TYP/TYPE/ TIPO				
	ERS./REP.			BEARB./CHG./ALT.			H 10000 MC - A-Axis				
	ERS.D./REP.W.			GEZ./DRAWN/DES.			WERKSTÜCK/ PART/PEÇA				
							BENENNUNG/NAME/DENOMINAÇÃO		INV-NR./INV-NO/NO-INV		
ePLAN 2.2.5							hydraulic diagram		Document type		&H hydraulic diagram
									Mounting position		+GOS guarding - operating side
									Page name		1
										A3	

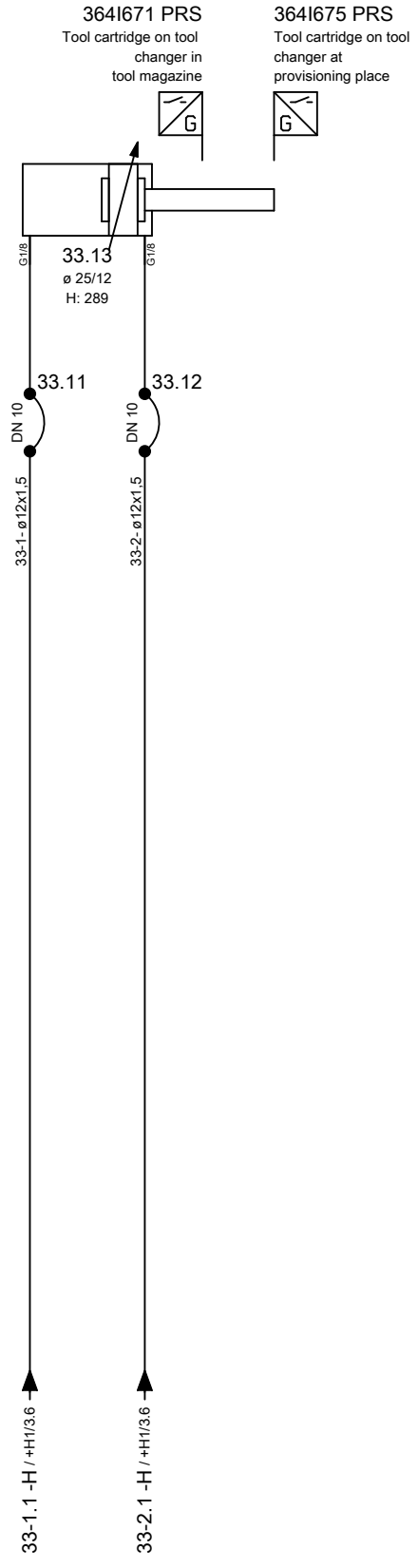
Änderungen nur im CAD-Original!
Changes in CAD only!
Mudanças no original CAD somente!

© Copyright reserved - Gebr. HELLER Maschinenfabrik GmbH, D-72622 Nürtingen
Schutzvermerk nach DIN 34 beachten!
Attention! Observe DIN 34
Atenção! Atente DIN 34

+H1/3.5
32
Tool cartridge
on setting station



+H1/3.6
33
Tool cartridge
on tool changer



← +GOS/1 &P+0 →

ART DER AENDERUNG/REVISION/DESCRIÇÃO DE ALTERAÇÃO		Index	ZONE/ZONA	DATUM/DATE	NAME/NOME	PROJ./PROJ/ PROJ.	HELLER	KUNDE/CUSTOMER/CLIENTE	PLAN/PLAN/PLANO
CAD-System		URSPR./ORIG.	GEPR./CHECK./REG.			M-NR/M-NO/ M-NO		Paccar, Columbus USA	project
ePLAN 2.2.5		ERS./REP.	BEARB./CHG./ALT.	04.04.2017	AHFE/ZAJ	M54807	hydraulic diagram	Machine	MP.05480700_F
		ERS.D./REP.W.	GEZ./DRAWN/DES.	15.03.2016	AHFE/HOP	H 10000 MC - A-Axis		INV-NR/INV-NO/NO-INV	=M54807
						WERKSTÜCK/ PART/PEÇA		Document type	&H hydraulic diagram
								Mounting position	+TM tool magazine
								Page name	1